



Currently the fastest 3D printer in the world





Uniz NBEE

Its printing speed is currently unbeatable – it prints 6 aligner models in approx. 5 minutes\*. Its patented liquid cooling system ensures a stable printing process with very high accuracy.

The patented Low Force Stereo Peel technology of the resin tank in combination with a collimated light source with high power (16 mW/cm<sup>2</sup>, 95 % uniformity) and the active monitoring of the reaction temperature create ideal conditions for fast and high-quality results.

\* Depending on height of model



Uniz SLASH 2 PLUS

SLASH 2 PLUS is a further developed model of the UNIZ desktop printer and also impresses with its speed. In the laboratory, values of up to 250 mm/hour are achieved. In other words, it prints 6 aligner models in about 18 minutes\*.

Like the NBEE, the SLASH 2 PLUS also features the patented liquid cooling system, which ensures a stable and reliable printing process. Thanks to an even more powerful LED light source (12000 mW/cm<sup>2</sup>) compared to the previous model, almost all dental resins available on the market, e.g. for direct print aligners, dental models, surgical guides and also IDB trays and nightguards, can now be processed on the SLASH 2 PLUS.

\* Depending on height of model

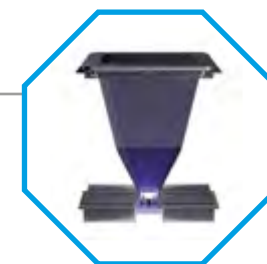
# Most important features



**High Efficiency Liquid Cooling**  
Maintain system temperature below 40 °C



**Micro-Stereo Composite**  
Patent low-force stereo peel technology



**High-power collimated light source**  
16 mW/cm<sup>2</sup> high power, 95 % uniformity



**Resin Temperature Control System**  
Maintain optimal resin temperature

# Technical data

		NBEE	SLASH 2 PLUS
PRINTING	Printing Technology	LCD Stereo Lithography	LCD Stereo Litography
	Build volume	192 x 120 x 180 mm   7.5 x 4.7 x 7.1"	192 x 120 x 200 mm   7.5 x 4.7 x 7.9"
	XY-resolution	49.8 µm	49.8 µm
	Maximum accuracy*	± 10 µm	± 10 µm
	Layer thickness (Z-resolution)	10 – 200 µm (25, 50, 100 recommended)	10 – 200 µm (25, 50, 100 recommended)
	Separation Mechanism	Stereo-Polymer-Multi-Layer-Film-Peel	Polymer-Film-Natural-Peel
	Support	Uniz smart support technology	Uniz smart support technology
	Printing speed**	6 aligner models in ca. 5 minutes	6 aligner models in ca. 18 minutes
HARDWARE	Dimensions / weight	380 x 380 x 1230 mm [LxWxH] 15 x 15 x 49" 60 kg   132 lb	350 x 400 x 530 mm [LxWxH] 14 x 16 x 21" 15 kg   33 lb
	Operating temperature	18 – 28 °C   64 – 82 °F	18 – 28 °C   64 – 82 °F
	Power requirements	110 V, 6A, 60 Hz   220 V, 3A, 50 Hz	100 – 240 V, 6A, 50/60 Hz
	Optical system	Collimated light source (4. Generation)	Patented LED Array Light Engine
	Gehäuse	Cast Aluminum and CNC Sheet Metal	Cast Aluminum and CNC, Injection Molding
	Connectivity	USB Flash drive, Wi-Fi, Ethernet	USB Flash drive, Wi-Fi, Ethernet
	Casing	7" Touch Screen	4.3" Touch Screen
SOFTWARE	System requirements	Windows 7 and up (64-bit only), Mac OS X 11.4 and up (64-bit only), 16GB RAM, OpenGL 2.1, Discrete Graphics	Windows 7 and up (64-bit only), Mac OS X 10.7 and up (64-bit only), 16GB RAM, OpenGL 2.1, Discrete Graphics
	Sliceware features	Advanced Model Repair Ultra Large File Support (1 GB+)	Advanced Model Repair Ultra Large File Support (1 GB+)
	Compatible formats	STL, OBJ, AMF, 3MF	STL, OBJ, AMF, 3MF, ZPRJ

\* Data was obtained with aligner models specifically defined for testing purposes. Results with other models may vary.  
\*\* Results with special speed testing models (other models may lead ti different results).

# Dental Slicing Software



- Intelligent scan repair feature
- Smart automated support function
- High-speed Modell-Slicing and data export
- Customizable editing functions

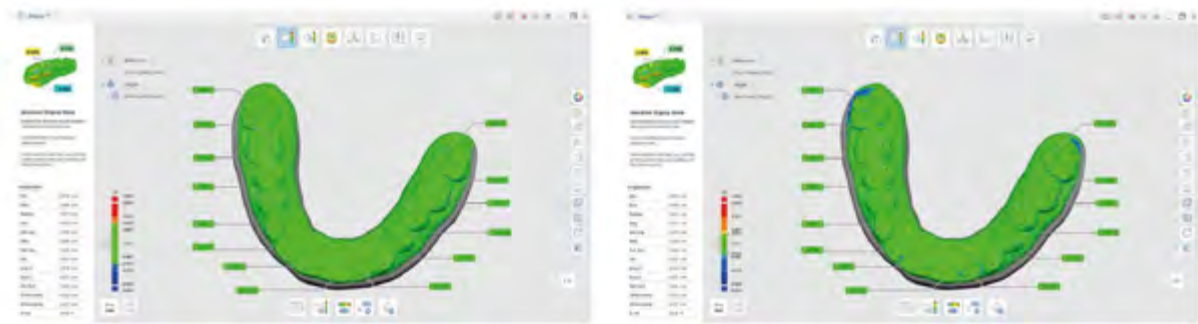
# Integration & Partnership



Seamless integration with leading providers of 3D-scanning and CAD/CAM solutions

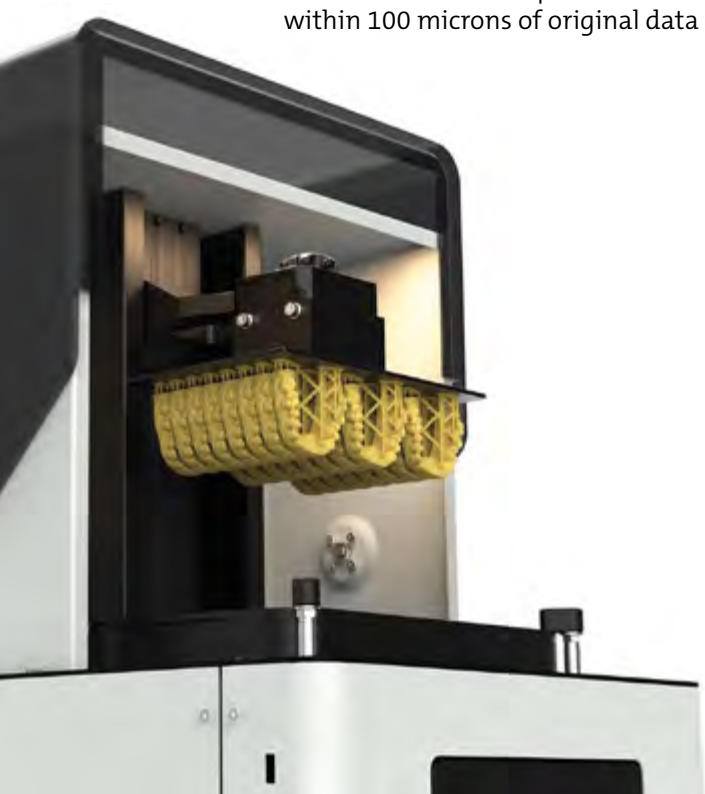
# High precision models

printed with Uniz NBEE



99.6% of data points  
within 100 microns of original data

95.05% of data points  
within 50 microns of original data



Surface at 50 microns  
Z-resolution

# Ordering details

Artikel-Nr.	Inhalt	Beschreibung
999-4000	1	<b>Uniz NBEE 3D-Printer</b> incl. resin tank, replacement for LCD module, protective foils for the projector screen, installation tools, 1 bottle of model resin, 220 V, 3A, 50 HZ
999-4002	1	<b>Uniz NBEE 3D-Printer</b> incl. resin tank, replacement for LCD module, protective foils for the projector screen, installation tools, 1 bottle of model resin, 110 V, 6A, 60 HZ (USA/Japan/LatAm)
999-4001	1	<b>Uniz NBEE Spare tank</b>
999-4010	1	<b>Uniz SLASH 2 PLUS 3D-Printer</b> incl. resin tank, protective foils for the projector screen, installation material and tools, 1 bottle of model resin, 100 – 240 V, 6A, 50/60 HZ
999-4011	1	<b>Uniz SLASH 2 PLUS Spare tank</b>
999-4012	1	<b>Uniz SLASH 2 PLUS Lid for resin tank</b>



**Hersteller:**

**Uniz Technology LLC**  
9400 Activity Rd Ste L  
San Diego, CA 92126, US

**Distributed by:**

**FORESTADENT**  
Bernhard Förster GmbH  
Westliche Karl-Friedrich-Straße 151  
75172 Pforzheim (Germany)  
Phone: +49 (0) 7231 459-0  
Fax: +49 (0) 7231 459-102  
[www.forestadent.com](http://www.forestadent.com)  
[info@forestadent.com](mailto:info@forestadent.com)

 **FORESTADENT®**  
GERMAN PRECISION IN ORTHODONTICS