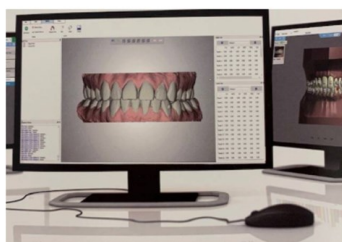




Bringing a new philosophy to the world of aligners
www.fasaligners.com



Free of charge estimation of feasibility of a case

An experienced staff member of Forestadent will evaluate your case and recommend the appropriate package for treating your patient. Minimum diagnostic elements: photos and x-rays.

Free of charge estimation of feasibility of a case



Flex: Small movements

Includes: Initial planning and the aligners necessary to achieve the objective.

Single aligners for small movements, relapses etc. Includes planning. Indications: - Crowding less than 3 mm. - Diastemas less than 1 mm. - Leveling of incisal edges less than 0.5 mm. to 1mm. - Expansion of less than 1 mm per quadrant. - Rotations of no more than 10°. Does not support midline correction. - Crossbite correction is not allowed. - Does not admit anteroposterior changes.

Flex: Small movements

Includes: Initial planning and the aligners necessary to achieve the objective.

Individual offer :

Planning : dkr.300,00

Per Aligner

| | |
|--------------|-------------|
| 1-4 aligner | dkr. 265,00 |
| 5-12 aligner | dkr. 230,00 |
| >12 aligner | dkr. 215,00 |



Target: Standard cases (20 + 5 sets)

Includes: Initial planning and replanning of finishing.

Treatment of simple/medium cases. Includes planning, 3D viewer, treatment plan and finishing replanning. Change of aligners every 14 days. Base product accu 40 aligners + replanning + finishing 10 aligners. Set upper/lower + 5 sets upper/lower (total of 25 sets or 50 aligners) Indications: - Crowding less than 5mm. - Diastemas less than 2mm. - Leveling of incisal edges less than 1 mm. - Expansions up to 2mm. - Rotations of no more than 25°. - Overbites up to 2 mm. - Open bite up to 1mm. - Midline correction up to 1mm. - Correction of 1 posterior tooth in crossbite and up to 2 anteriors.

Target: Standard cases (20 + 5 sets)

Includes: Initial planning and replanning of finishing.

Standard

Case 0- 5 dkr. 9.995,00

Silver

Case 5-10 dkr. 8.200,00

Gold

Case 10-15 dkr. 7.500,00

Platinum

After case 15 dkr. 6.800,00



fas Compact: Medium and complex cases (25 + 15 + 5 sets)

Includes: OcclusalDesign® and up to 2 additional replannings.

The proposed treatment plan (FAS COMPACT) is a treatment limited to 25 aligners per arch, which includes the initial planning (OcclusalDesign) and up to two finishing replannings if necessary. It should be noted that due to biological factors, teeth may not move exactly as programmed, so there is a possibility that additional aligners may be required in addition to the selected product. Change of aligners every 10 days. Indications: - Crowding less than 6 mm. - Diastemas less than 4 mm. - Leveling of incisal edges 2 mm. - Expansions up to 3 mm per quadrant. - Rotations of no more than 30°. - Overbites up to 2 mm without auxiliaries, for more than 2 mm auxiliaries are indicated. - Open bite up to 2 mm. Admits posterior intrusion with mandibular anterior-rotation. - Midline correction up to 2mm. - Crossbite correction as needed without exceeding 3mm of expansion per quadrant. - Anteroposterior changes up to 3 mm.

fas Compact: Medium and complex cases (25 + 15 + 5 sets)

Includes: OcclusalDesign® and up to 2 additional replannings.

Standard

Case 0- 5 dkr.12.750,00

Silver

Case 5-10 dkr.12.000,00

Gold

Case 10-15 dkr.11.100,00

Platinum

After case 15 dkr.10.200,00



fas compact with roots: Medium and complex cases (25 + 15 + 5 sets). Requires CBCT

Includes: OcclusalDesign® and up to 2 additional replannings.

Includes root segmentation (CBCT required). The proposed treatment plan (FAS COMPACT) is a treatment limited to 25 aligners per arch, which includes the initial planning (OcclusalDesign) and up to two finishing replannings if necessary. It should be noted that due to biological factors, teeth may not move exactly as programmed, so there is a possibility that additional aligners may be required in addition to the selected product. Change of aligners every 10 days. Indications: - Crowding less than 6 mm. - Diastemas less than 4 mm. - Leveling of incisal edges 2 mm. - Expansions up to 3 mm per quadrant. - Rotations of no more than 30°. - Overbites up to 2 mm without auxiliaries, more than 2 mm indicate use of auxiliaries. - Open bite up to 2 mm. Admits posterior intrusion with mandibular anterior-rotation. - Midline correction up to 2mm. - Crossbite correction as needed without exceeding 3mm of expansion per quadrant. - Anteroposterior changes up to 3 mm.

fas compact with roots: Medium and complex cases (25 + 15 + 5 sets). Requires CBCT

Includes: OcclusalDesign® and up to 2 additional replannings.

Standard

Case 0- 5 dkr.13.490,00

Silver

Case 5-10 dkr.12.600,00

Gold

Case 10-15 dkr.11.700,00

Platinum

After case 15 dkr.10.750,00



fas PRO: Complex cases

Includes: OcclusalDesign®, up to 2 Stop and GO® and up to three additional replannings.

The proposed treatment plan (FAS PRO) includes initial planning (OcclusalDesign), STOP and GO and up to three intermediate or finishing replannings if necessary. Change of aligners every 10 days in working phases and in case of corticotomies every 5 days during their effect. Cases in which the planning team detects that with initial work phase the precise objectives cannot be achieved by the use of auxiliaries, anchorage devices or others will be rejected. Indications: - Admits any type of case. - It admits cases with corticotomies and decompensation of surgical cases.

fas PRO: Complex cases

Includes: OcclusalDesign®, up to 2 Stop and GO® and up to three additional replannings.

Standard

Case 0- 5 dkr.15.000,00

Silver

Case 5-10 dkr.14.000,00

Gold

Case 10-15 dkr.13.000,00

Platinum

After case 15 dkr.12.000,00



fas PRO with roots: Complex cases. Requires CBCT

Includes: OcclusalDesign®, up to 2 Stop and GO® and up to three additional replannings.

Includes root segmentation (CBCT required). The proposed treatment plan (FAS PRO) includes initial planning (OcclusalDesign), STOP and GO and up to three intermediate or finishing replannings if necessary. Change of aligners every 10 days in working phases and in case of corticotomies every 5 days during their effect. Cases in which the planning team detects that with initial work phase the precise objectives cannot be achieved by the use of auxiliaries, anchorage devices or others will be rejected. Indications: - Admits any type of case. - It admits cases with corticotomies and decompensation of surgical cases.

fas PRO with roots: Complex cases. Requires CBCT

Includes: OcclusalDesign®, up to 2 Stop and GO® and up to three additional replannings.

Standard

Case 0- 5 dkr.15.500,00

Silver

Case 5-10 dkr.14.500,00

Gold

Case 10-15 dkr.13.500,00

Platinum

After case 15 dkr.12.500,00