



**ORTHERO**

**The Clearest Way of**  
Changing Your Smile

## DOCTOR INFORMATION BROCHURE



**Enjoy the Digital Orthodontic Alternative to  
Metal Braces with Orthero!**

# Why Clear Aligner Treatment?



## Why Clear Aligner Treatment?

An increasing number of doctors now prefer clear aligners for orthodontic treatment due to their many advantages. ORTHERO Clear aligners are:

- Almost Invisible.
- Removable.
- Do not adversely affect dental hygiene.
- Offer more precise tooth movement control.
- Give an opportunity to achieve controlled teeth movement.

The number of clinics worldwide using clear aligner treatments increased by **25%** in **2019**. It is estimated that this figure will triple by **2026**.

Clear aligners are the preferred orthodontic choice due to their appeal to a wide age group as well as their ease of application and comfort of use.

Orthero advantages over metal braces are:

- ✓ Removable
- ✓ Clear and Aesthetic
- ✓ Comfortable

[ref: [www.fortunebusinessinsights.com/industry-reports/clear-aligners-market-101377](https://www.fortunebusinessinsights.com/industry-reports/clear-aligners-market-101377)]



You can treat a wide variety of cases using **ORTHERO Clear Aligners**.



Diastema



Crowding



Cross bite



Open bite



Overjet



Deep bite



 A New Smile For Everyone...

**ORTHERO**

	Normal	Medium	Hard
Crowding	< 4 mm	< 8 mm	8 mm+
Diastema	< 4 mm	< 8 mm	8 mm+
Expand	< 2 mm	< 4 mm	4 mm+
Intrusion of Anterior	<0,5 mm	< 1 mm	1 mm+
Intrusion of Posterior	-	< 0,8 mm	0,8 mm+
Extrusion of Anterior	<1 mm	< 2 mm	2 mm+
Extrusion of Posterior	-	<1 mm	1 mm+
Midline shift	< 2 mm	< 4 mm	4 mm+
Overjet	-	< 4 mm	4 mm+
Overbite	-	< 3 mm	3 mm+
OpenBite	-	< 1 mm	1 mm+
Distalization	2 mm	< 4 mm	4 mm+
Mezialization	-	< 2 mm	2 mm+





## What is Orthero?

Orthero was established in 2012 at Istanbul Technical University with the goal of developing high-technology solutions for the dental sector. The company grew following domestic and international investments, becoming the first digital orthodontic startup exceeding **20,000** successful treatment cases and a leading brand by the end of 2019.



## Why Orthero?

### Always With you

Throughout the treatment process, from the initial planning to the final stages of treatment, **Orthero** is committed to work with you. We are just a click away.



**ORTHERO**

### Fast

The customized aligner production will be accomplished after 5 days following your approval. We will be connected with you throughout the treatment process.

## Experienced Specialist Advisors

Your patient's treatment plan and the ideal arch are designed by our team of experts.

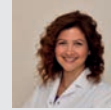
## Training with Our Advisors

We conduct annual training sessions to ensure you achieve better treatment results.



**Dr. Dt. Kerem Atamözlü**  
Ortodontist

Patients wearing clear aligners are comfortable as they continue their treatment. The aligners are not noticeable and do not cause complications like wounds and food impaction common with braces. Patients are completely free to eat what they like and brush their teeth comfortably.



**Dr. Dt. Sinem Ceylanoğlu**  
Ortodontist

Clear aligners shorten the treatment time by 30% compared to brackets, which helps save time.



**Dr. Dt. Burcu Usta Selamet**  
Ortodontist

If we have no problems with patient cooperation, we can achieve the same result as with metal brackets use, giving the same reliability.



# Expert Opinions...



**ORTHERO**

# Orthero Planner

With Orthero, The Treatment Plan Is Under Your Control.

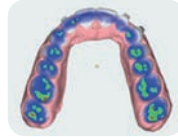
Using state of the art software Developed with Turkish-German engineering



You can make the tooth movements and design the treatment yourself.



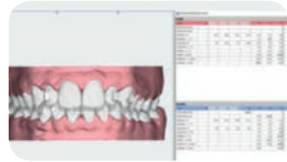
IPR and repositioning of existing attachments



Dynamic Interproximal and occlusal contact indicators



Grid and measuring feature



Dynamic movement & IPR table

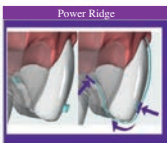


Mandibular jaw movement

## Attachments



Extrusion



Power Ridge



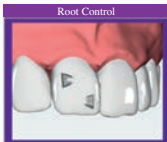
Intrusion Support



Canine Rotation



Combo Movement Attachment



Root Control



Lingual Bite Ramp



Occlusal Bite Ramp

ORTHERO

# Treatment Tracking is very easy with the Orthero Portal

The **Orthero** Portal is a cloud-based system allowing you to analyze the final occlusion of your case using the **Orthero** Orthodontic software prior to starting treatment and share it with your patient. You can easily monitor your 3-D treatment plan and observe its progress online.



- Enter your patient name, surname, and date of birth.
- Indicate the treatment process details and your requests.
- Uploading the photographs or x-ray or the impression of the patient into the **Orthero** portal.
- You can track your case through the application.
- You will be notified when your impression is received.
- When treatment planning of your case is completed you can examine the results of the 3-D simulation using the **Orthero** Portal.
- You can approve your cases online or request a revision.
- Once a case is approved, the Orthero Portal allows you to monitor every step of the production process online.



# Treatment Process

ORTHERO



An accurate indication and patient cooperation are the two significant requirements while having ORTHERO treatment. The patient can easily start the treatment if they are willing to wear aligners 22 hours a day. All of the patient's dental problems must be treated prior to starting the Orthero clear aligner treatment.

## ○ Inspection

Take Intraoral and extraoral photos, upper and lower jaw silicone impression (heavy & light body) and bite registration. Alternately, you may use an intraoral scanner to send us the data

## ○ 3D Scanner and 3D Analysis

The impression is transferred to our server using a high-precision 3D scanner. Digital models will be evaluated by your patient's ideal smile treatment plan will be uploaded to the **Orthero** Portal for your inspection and approval.

## ○ 3D Analysis

You can access the Portal using your e-mail and a password. The treatment plan is presented as a 3D analysis and report, giving the final teeth alignment results. The treatment plan is now available for your approval or any revision that may be requested.

## ○ Production with 3D printers

Orthero clear aligners are custom manufactured using high-precision 3D printing technology and delivered along with all other materials within 5 days.

## ○ Controls

Patients need to wear their aligners 22 hours per day, removing them only for eating. We recommend you checking up on your patients every month to review their compliance and progress. Regular examination of your patients will help complete the treatment process.

## ○ Treatment Conclusion

When the same results as our treatment plan is achieved, the retention appliances are prepared and sent to you.

## ○ Orthero Guarantee

We offer a guarantee period depending on the treatment type.

# The World Loves Orthero!

In Turkey, over 2,000 doctors trust Orthero to give more than 20,000 patients the smile they deserve. As a leading brand in clear aligner technology at home and growing in 11 countries abroad, Orthero is working hard to deliver more smiles around the world.



95%\* 

95% Satisfaction with Customer Service

We are always here to help you!

\* 2018 - 2019 Survey Results

**ORTHERO**





**ORTHERO**

## Our New 3D Printing Technology

### Ultra-fast and precise Continuous Digital Light Manufacturing (CDLM) Technology

Using this state of the art proprietary technology, it is now possible to print even the smallest details with high precision at speeds that are 70% faster than before. The CDLM Technology is one of the most accurate and rapid dental technologies available.

Additive manufacturing is simply separating 3D objects into layers in the digital environment, and putting those layers back together in the physical world by different advanced techniques.

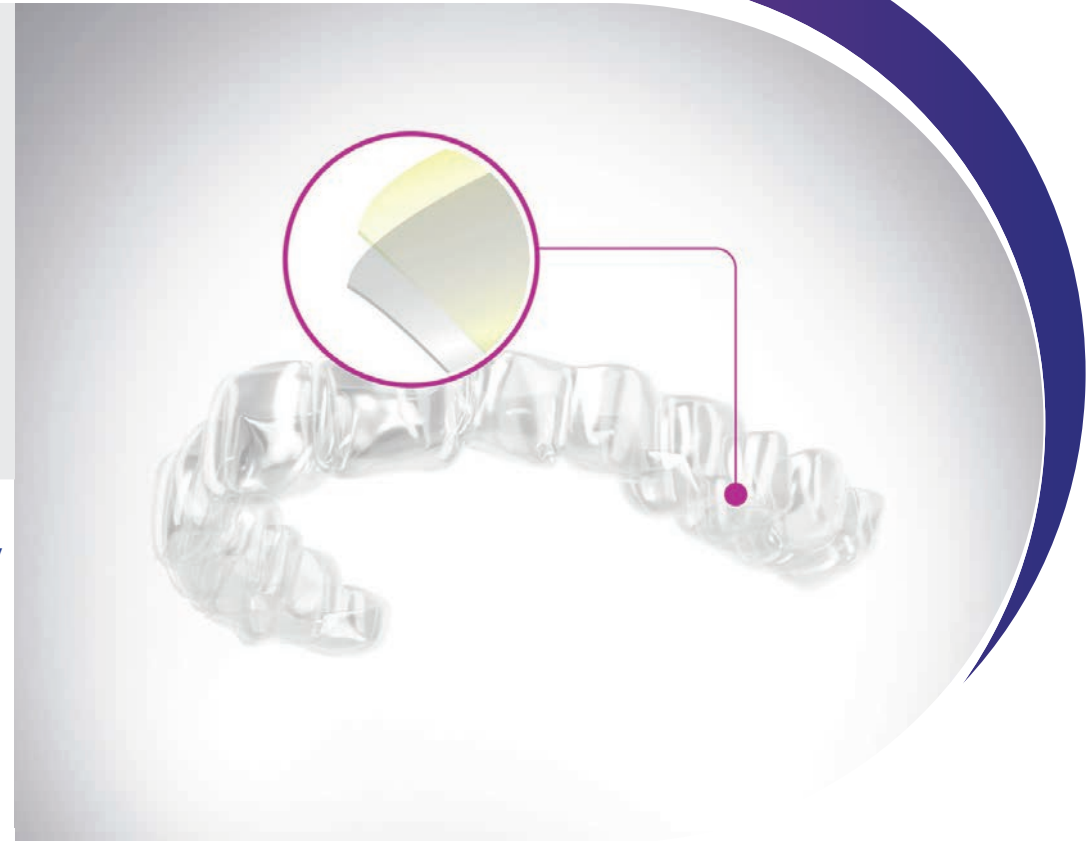
#### Dome Effect



Patented Technology

Classical Method

Besides all those methodologies, CDLM has a resin tank with a patented film layer that minimizes the separation force with the help of oxygen. By this special layer, oxygen injection through the tank, the dome effect doesn't appear and every single inch of the platform is equally leveled. This function brings high precision and high speed together.



### Double layer Template Attachment

- It is now very easy to apply attachments to your patients using our new double-layer attachment templates
- Following extensive research, we accomplished the reduction of the failure rate of adhesion from 3% down to 0.2% with the addition of a second layer of foil.
- Another advantage of this system is that in case of a possible problem in the attachment adhesion, the foil layer can be easily removed, giving a second opportunity to try the attachment template without foil.



ORTHERO

## Zero-Touch Production with CNC Technology

**With CNC technology that provides maximum sterilization,  
we can produce clear aligners without human touch.**

We have incorporated **5-axis** CNC technology into our production infrastructure. Thanks to this new technology integrated as a result of our R&D studies, we can produce clear aligners without human touch and keep the **sterilization** at the maximum level.



### Advantages of production using CNC technology:

- Eliminates human error by using software and machine automation in the operation of the whole system
- Cuts the aligner in a way to be completely aligned with the gingival margin
- Eliminates deviations caused by the gingival simulation
- Provides production with the highest precision and quality

ORTHERO

## Fast Treatment with 3-Layer Clear Aligners

TPU Layer

Elastomeric  
Layer

TPU Layer

### 3-Layer Clear Aligners Produced Using High Material Technology Provide 30% Faster Treatment.

**High Technology:** Orthero offers dentists a production option of more comfortable and highly elastic 3-layer clear aligners, which are developed using high material technology as a result of long-term R&D studies.

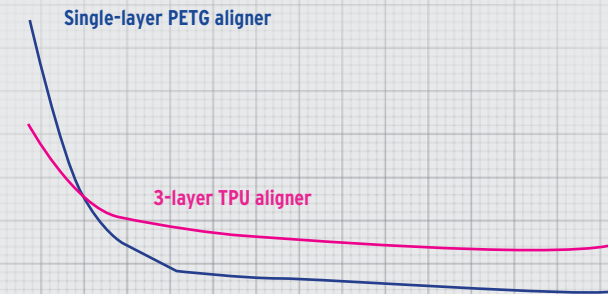
**High Elasticity:** High elasticity is achieved by integrating an elastomeric layer in the middle of the two TPU layers. This technology both improves patient comfort and minimizes the mechanical wear and time-dependent loosening of the aligner.

**Increased Patient Cooperation, Stable Aligner Strength:** Studies have shown that force threshold applied is 35% lower in Clear Aligners produced with new material technology and thus, patients experience less pain in the first days of treatment. Furthermore, at the end of the 7th day, the aligners have been found to maintain their strength and continue to apply 180% higher amount of force.

**Shorter Treatment Time:** Thanks to this high elasticity, you just need to change the Orthero Clear Aligners at 10-day intervals instead of 14 days, ensuring 30% faster treatment.

**Less force!**

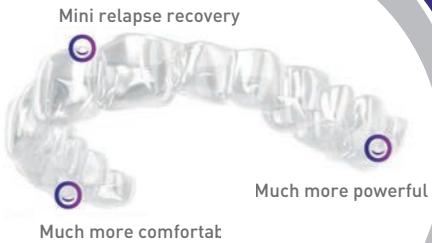
Less pain and higher cooperation  
thanks to the initial force  
that is decreased by 1 in 3.



3-layer aligners do not loosen  
and at the end of a week,  
they apply 3 times more force  
compared to a single-layer aligner

**Doesn't get loose!**





## HEROTAIN – THE ANTI RELAPSE SOLUTION

HEROTAIN, a special high-quality resin developed using advanced production techniques ensures that the final position of the teeth are protected following the treatment.

**More powerful:** Clinical research has shown that retention aligners produced with classical thermoplastic can undergo severe deformation within a short period of time as a result of daily use. Herotain, thinner and 40% stronger than conventional thermoplastics, does not wear out easily and is ideal for long-term use.

**Much more comfortable:** despite its strong structure, its high elasticity makes it more comfortable to wear.

**Mini relapse recovery:** in case of possible relapse, it has the ability to recover the relapse by up to 0.3 mm.



Your patient's planned final model is in the Orthero box with Herotain!



When clear aligners are first applied to the patient, they may not always fit 100%. By using chewies, a better fit of the aligners and consequently more effective results can be achieved.



ORTHERO



**THE CLEAREST WAY OF  
IMPROVING YOUR SMILE**

**i Ortodonti Service A/S  
Ellekær 9 2.th.  
DK- 2730 Herlev, Danmark**

**[www.ortodontiservice.dk](http://www.ortodontiservice.dk)**

**ORTHERO**

**The World Loves Orthero!  
Aligned With Innovation.**



@ortheroaligner



@Ortheroaligner



ORTHERO