



SHINING 3D

FROM 3D SCAN TO 3D PRINT

Professional Digital Dental Solutions



AoralScan 3
Intraoral Scanner



EinScan Pro 2X 2020
Handheld 3D Face Scanner



AutoScan-DS-MIX
Dental 3D Scanner



GO DIGITAL WITH SHINING 3D

SHINING 3D provides fully integrated 3D digital dental solutions from obtaining 3D data with 3D scanners for dental labs and intraoral 3D scanners for clinics, then design with professional dental CAD software, to direct printing dental products, including working models, orthodontics models, implant models, surgical guides, wax-ups, partial frameworks with DLP 3D printers.



AutoScan-DS-EX Pro
Dental 3D Scanner



AccuFab-D1s
Dental 3D Printer

Fab Cure
Light Curing Box



AccuFab-L4D
Dental 3D Printer

JUST SCAN IT

Aoralscan 3
Intraoral Scanner

Technical Specifications

Aoralscan 3

Scan field	Standard tip: 16 × 12 × 22 mm Small tip: 12 × 9 × 22 mm
Scan principle	Non-contact scanner with structured light
Dimension (L × W × H)	281 × 33 × 46 mm
Weight	240 ± 10 g (without cables)
Output	STL, OBJ, PLY
Connector	USB 3.0
Power Input	12V DC/3 A

Recommended PC Configuration

CPU	Intel Core i7-8700 or higher
RAM	16 GB or higher
Hard Drive	256 GB SSD or above
Graphic Card (GPU)	NVIDIA® RTX 2060 6GB or higher
Operating System	Windows 10 Professional (64-bit) or later versions of Windows operating system
Screen Resolution	1920 × 1080, 60Hz or higher
I/O Ports	More than 2 type-A USB 3.0 (or higher) ports

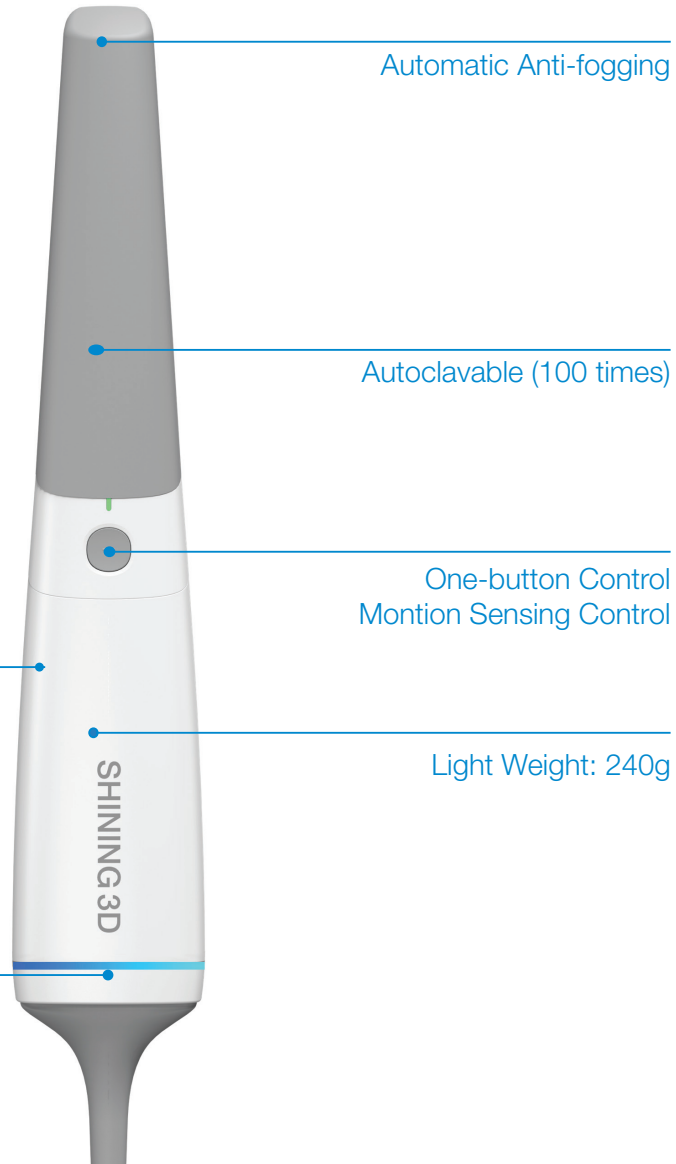


Meet AoralScan 3

Empowering a Highly Efficient Digital Chairside Solution

Say hello to SHINING 3D's brand new intraoral scanner, AoralScan 3! Exceptional, smart and elegant, AoralScan 3 improves the overall clinical experience. It allows users to easily acquire vivid digital impressions in a faster and more accurate way.

Moreover, AoralScan 3 comes with a wide range of different intelligent functions, guaranteeing more comfortable chairside experience and efficient clinic-lab collaboration.



Automatic Anti-fogging

Autoclavable (100 times)

One-button Control
Motion Sensing Control

Light Weight: 240g

Ergonomically Designed
for Optimal Hand-held
Operation

Dynamic LED Indicator

Capture Digital Impressions in Real Time

Fast, Accurate and Exceptional Scan Performance

The constant optimization and innovation of SHINING 3D's hardware and software system, led to the release of its latest and finest intraoral scanner, Aoralscan 3.



FASTER SCAN

The scan speed is 30% faster than the last generation due to Aoralscan 3's drastically upgraded scanning technology.



MORE ACCURATE SCAN

Thanks to optimized algorithms and imaging mechanisms, Aoralscan 3 carries out more accurate and precise results by 30%, meeting the clinical needs of different applications.



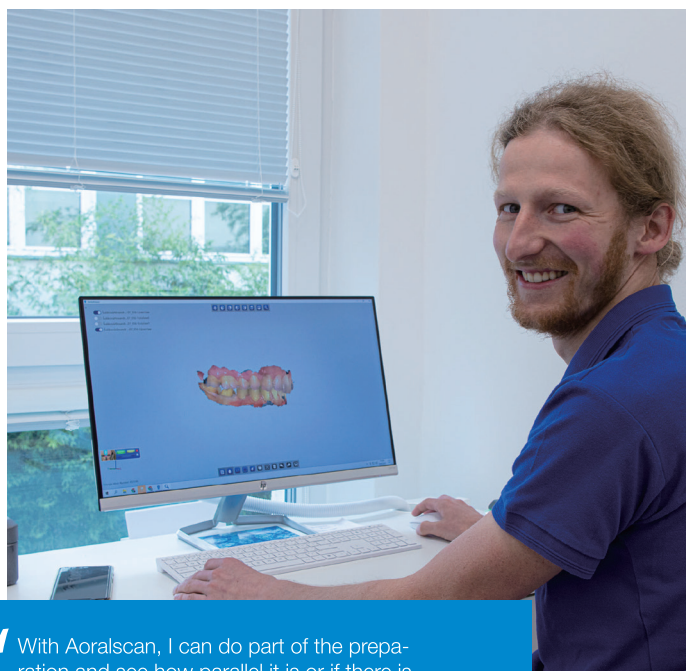
LONGER SCAN TIP

Slimmer and 15% longer autoclavable scanner tips offer patients a more comfortable clinical experience.



GREATER SCAN DEPTH

Aoralscan 3 is suitable for various clinical scenarios including acquiring scan bodies and periodontal scans.

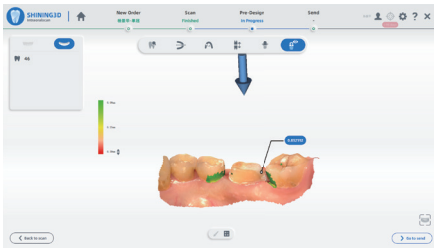


“ With Aoralscan, I can do part of the preparation and see how parallel it is or if there is enough space. I can then sharpen it, rescan it and that's the biggest advantage, such a procedure is unthinkable with classic prints. ”

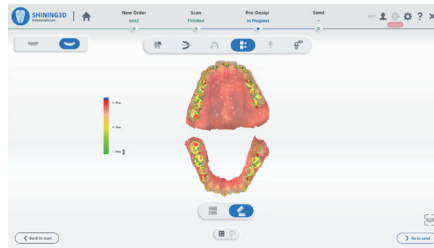
— ŠTĚPÁN VINKLER, MDDR, the Czech Republic

Clinical Toolkit

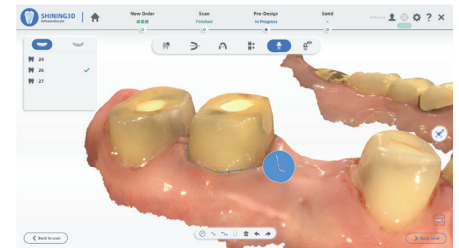
The clinical toolkit assists dentists to evaluate and pre-design the scanned data in their own clinic. It facilitates effective communication with dental labs to deliver quality dental work with high efficiency.



Undercut Check



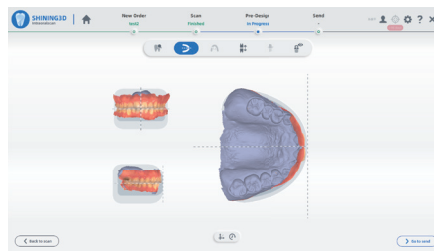
Bite Check



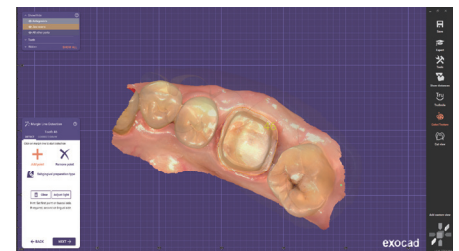
Margin Line Auto Extraction



Tooth Marking



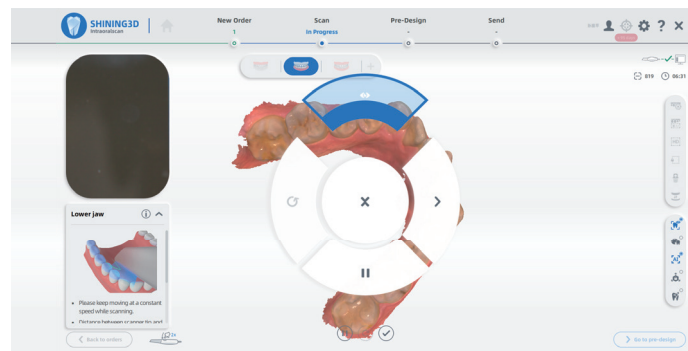
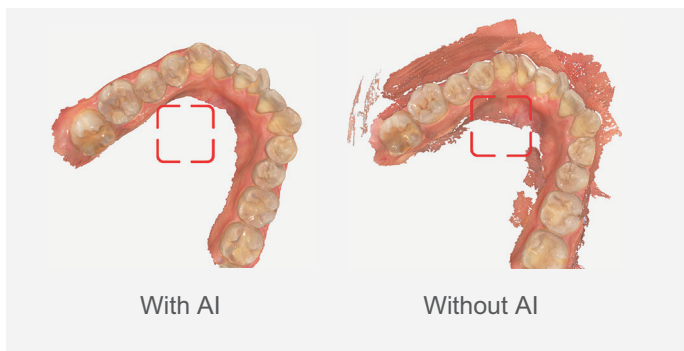
Coordinate Adjustment



Direct Export to exocad

User-Friendly

Smart and Intuitive - Smooth Scanning Experience



AI SCAN

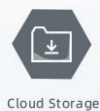
Automatically identifies and filters out unnecessary soft tissue data during scanning resulting in a quicker and cleaner scan process.

MOTION SENSING

Dentists can scan with minimal contact with the computer, ensuring a safe and efficient scan experience.

SHINING3D DENTAL CLOUD

Connecting clinics and dental labs,
jointly build a healthy ecosystem of dental digital platform.



Data Transmission

Cloud Storage

Order Track

Communication



**FAST
AND
ACCURATE**

EinScan Pro 2X 2020

Handheld 3D Face Scanner

Technical Specifications

EinScan Pro 2X 2020

Scan Mode	Handheld Rapid Scan
Scan Accuracy	up to 0.1 mm
Volumetric Accuracy [1]	0.3 mm/m (Marker Alignment)
Scan Speed	30 fps 1,500,000 points/s
Point Distance	0.2 mm - 2 mm
Single Scan Range	150 x 120 mm — 250 x 200 mm
Depth of Field	±100 mm
Light Source	LED
Working Distance	400 mm
Align Mode	Marker Alignment, Texture Alignment [2], Feature Alignment [3], Hybrid Alignment [4]
Texture Scan	Yes (with Add-on: Color Pack)
Outdoor Operation	Set up the shelter or cover to avoid direct sunlight
Special Objects for Scanning	For the transparent, highly reflective or some dark objects, please spray powder before scanning
Printable Data Output	Able to export watertight 3D model directly to 3D printing
Output Formats	OBJ , STL , ASC , PLY , P3 , 3MF
Scanner Body Weight	1.13kg (including the USB3.0 cable)
Supported OS	Win 10, 64 bit
Recommended	Graphics card: NVIDIA GTX/RTX series cards, higher or equal to GTX 1080; video memory: ≥4G; processor: I7-8700 or higher; memory: ≥64G; interface: high-speed USB 3.0
Required	Graphics card: Equal or higher than NVIDIA Quadro card P1000 or NVIDIA GTX660; processor: Intel (R) Xeon E31230, Intel (R) I5-3470, Intel (R) I7-3770; interface: high-speed USB 3.0; memory: 8G

Notice: [1]. Volumetric accuracy refers to the relationship between 3D data accuracy and object size; the accuracy is reduced by 0.3mm per 100cm. The conclusion is obtained by measuring the center of sphere under marker alignment.

[2]. This alignment needs Color Pack assisting, and requires rich color texture information on the surface of the object. [3]. Select this alignment when scanning objects with rich geometrical features on the surface.

[4]. Hybrid alignment means marker alignment and feature alignment can be switched automatically. SHINING 3D reserves the right to explain any alteration of the specifications and pictures. Please refer to einscan.com to find more information.

EinScan Pro 2X 2020

Accurately Align the Face and Intraoral Data

EinScan Pro 2X 2020 is a handheld 3D face scanner self-developed by SHINING 3D. It is light, compact and easy to operate. Acquisition is not only fast but users can acquire the teeth surface data simultaneously in order to achieve the exact match of intra-oral data and face 3D data together. The scanner is specially designed for maxillofacial reconstructions, aesthetic prosthodontics, occlusal reconstructions and other facial and dental applications.

0.1mm

Accuracy

10s

Rapid Scan

1.13kg

Net Weight

CAD

Compatible



FAST SCAN

Acquire complete face 3D data in 10 seconds.



HIGH ACCURACY

Supports acquisition of high-definition 3D face data, with high accuracy of approximately 0.1mm.



PORTABLE & USER-FRIENDLY DESIGN

With a lightweight and compact size, you can easily take the EinScan Pro 2X 2020 anywhere like a laptop, enjoy plug-and-play installation and unlimited scanning experience.



OPEN AND COMPATIBLE

Can export various file formats: STL, ASC, OBJ, PLY. Compatible with various CAD software.

Visual Facial Diagnosis



EinScan Pro 2X 2020 supports rapid acquisition of the patient's facial and teeth surface data. It can achieve accurate matching of facial, intraoral and CBCT data. Therefore, EinScan Pro 2X 2020 is specifically designed for facial and dental analysis, occlusal reconstruction, and many other application cases. This scanner helps to provide more straight forward communication with patients, thus achieving increased satisfaction with results.

EinScan Pro 2X 2020 handheld facial 3D scanner covers a wide range of facial treatment applications which includes: anterior aesthetic prosthodontics, digital smile design, etc.



Cosmetic
Anterior
Restoration



Orthodontics
Treatment



Implant
Restoration



ENTER INTO DIGITAL DENTISTRY

AutoScan-DS-EX Pro
Dental 3D Scanner

Technical Specifications

AutoScan-DS-EX Pro

Camera Resolution	2x1.3 MP
Accuracy	< 10 μm
Scanning Time	8s for bite scan; 12s for upper/lower jaw scan; 13s for 1-4 dies scan; 21s for 5-8 dies scan; 58s for impression scan.
Dynamic Scan	Articulators are supported, scan head swings by 0~5 degrees.
Output Format	STL, OBJ, PLY
Light Source	Blue Light
Dimensions	385 x 250 x 270 mm
Weight	5 kg
Interface	USB 3.0
Power Supply	DC 24 V



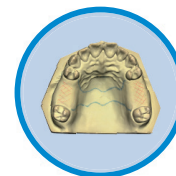
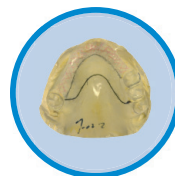
Multiple Functions In one Machine

For All Fixed and Removable Restorations

On the basis of the original DS-EX Pro dental 3D scanner, Shining 3D has launched an updated version and introduced the color texture high-speed scanning function. The new upgraded DS-EX Pro is versatile with simple operation and high efficiency. It satisfies the needs of various dental applications, including fixed and removable restorations, implants, orthodontics etc.

COLOR TEXTURE SCAN IN DETAILS

Clearly captures the textures and marks on the plaster model. The unique HDR scan mode supports RPD wax and gingiva scan without spraying. Supporting dental technicians to easily complete the digital design of the RPD(removable partial denture).

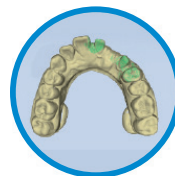


INTELLIGENT SCAN

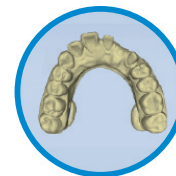
The software recognizes the working area automatically. The non-separate models can be scanned by one click, reducing the workload of technicians.



Intelligent software recognizes missing data sections



Automatic smart re-scan



One-click scan capture all the data

VARIABLE ARTICULATORS ACCOMPLISHING TASKS IN A SIMPLE MANNER

Compatible with static, dynamic and simple articulators for high efficiency. The scan tip's angle can be adjusted to the desired height, and has wider range of coverage of the whole model, improving the accuracy of occlusion scan.

*Suitable articulator: Bio-art, Kavo, SAM, Artex



ALL IN ONE HIGHER EFFICIENCY

Supports upper/lower jaw quadrant models and dies simultaneous scan, reducing the operation steps and improving the efficiency of technicians up to 30%.

Traditional SCAN

4 STEPS



occlusion



working model



antagonist model



dies

ALL IN ONE SCAN

2 STEPS



occlusion



All in one

MORE THAN DETAILS

AutoScan-DS-MIX
Dental 3D Scanner

Technical Specifications

AutoScan-DS-MIX

Camera Resolution	2x5.0 MP
Accuracy	≤ 7 μm
Scan Time	6s for bite scan; 13s for upper/lower jaw scan; 18s for 1-4 dies scan; 33s for 5-8 dies scan; 32s for impression scan
Articulator Scan	Dynamic/ static ; support articulator transfer
Output Format	STL, PLY
Light Source	Blue Light
Dimensions (LxWxH)	238 x 340 x 447 mm
Weight	7.5 kg
Interface	USB 3.0
Power Supply	DC24 V



AutoScan-DS-MIX

High-End Dental 3D Scanner

AutoScan-DS-MIX is a high-end dental 3D scanner developed by SHINING 3D. With open design and modular structure, DS-MIX features fine details, high accuracy and high efficiency to fulfill users' demands of a wide range of dental applications including implant crowns&bridges, abutments and bars, etc.



ULTRA-FINE DETAILS

Thanks to dual 5.0 MP high resolution cameras, AutoScan-DS-MIX can perfectly capture edge line of abutments and features of scan bodies.



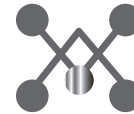
HIGH ACCURACY

Scan accuracy $\leq 7\mu\text{m}$ assures reliable scan result.



HIGH EFFICIENCY

The AutoScan-DS-MIX supports high efficiency scan mode: 13 seconds for scanning a full arch.



INTELLIGENT SCAN

Integrated with user-friendly interface, one-click scan & intelligent scan, the AutoScan-DS-MIX offers intuitive user experience.



HIGH COMPATIBILITY

Export .stl and .ply format, flexibly integrated in CAD/CAM solutions.



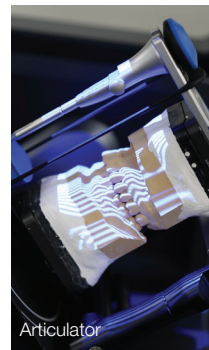
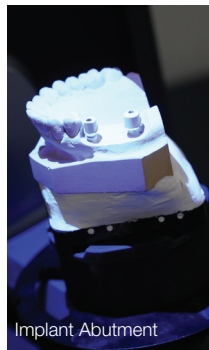
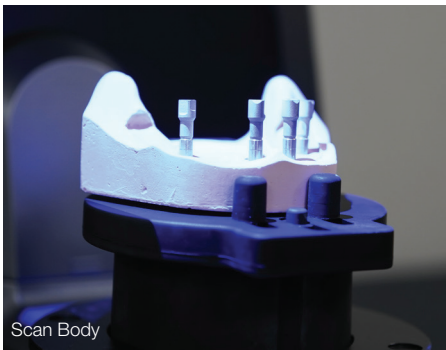
MODULAR DESIGN

More convenient for maintenance and possible for future upgrade.

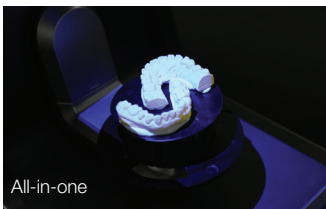
Wide Range of Applications

IMPLANT 3D SCANNING

- Keep details of edge and surface intact.
- Optimize implant scanning process and improve scanning efficiency.
- Not only support dynamic and static two scan modes for most common articulators, but also support articulator transfer for Artex, Kavo, SAM and Bio-Art articulators.



ALL-IN-ONE



NON-SEPARATED MODEL



TRIPLE TRAY



TEXTURE



LIT UP FOR DENTISTRY

AccuFab-L4D
Dental 3D Printer

Technical Specifications

AccuFab-L4D

Printer Size	360 x 360 x 530 mm
Printer Weight	about 19 kg
Print Volume (x/y/z)	192 x 120 x 180 mm
Resolution	3840 x 2400(4K) Px
Print Speed	10-50 mm/h (depends on layer thickness and materials)
Layer Thickness	0.025/0.05/0.075/0.1 mm
Accuracy	± 50 μm
Connectivity	USB/Wi-Fi/Ethernet



*Notice: SHINING 3D reserves the right to introduce modifications or alterations to any of the specifications and images used in this document.

**Copyright © 2004- 2021 SHINING 3D Corporation, All Rights Reserved.

AccuFab-L4D

Large-format Dental 3D Printer

AccuFab-L4D is the latest addition to the SHINING 3D family digital solutions. It is a large-format dental 3D printer developed completely in-house by SHINING 3D to make 3D printing solution more accessible to everyone. It brings users an exceptionally unique printing experience with its features like light-weight, large print size and user-friendly operation.

AccuFab-L4D's comprehensive functions contribute to take users' dental digitization process up to another level. It supports different dental applications such as dental model, ortho model, surgical guide and so on.



LARGE PRINT SIZE, HIGH RESOLUTION

192*120mm printing size and 4K resolution satisfy the demands of users for efficiency and details .



COST-EFFECTIVE INVESTMENT

Compact and cost-effective AccuFab-L4D helps users accomplish easy digital transformation.



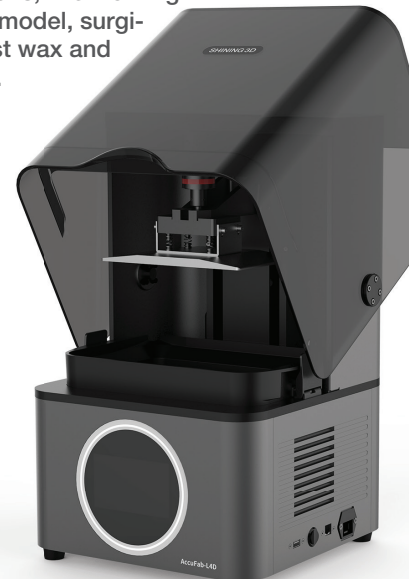
USER-FRIENDLY OPERATION

SHINIING 3D's self-developed printing software AccuWare comes with a guided workflow to assist users through the printing process for an easy and convenient operation. It boasts of smart layout planning, one-click support generation and one-click printing, which make it quite easy to get started.



MULTIPLE MATERIAL OPTIONS

SHINIING 3D's SHINING DENT covers a wide range of resin materials for dental printing applications, like working model, ortho model, surgical guide, cast wax and gingiva mask.



Light Weight And User Friendly

In order to make the 3D printing technology more accessible for more users, AccuFab-L4D incorporates a number of intuitive designs to simplify the whole process from data preparation and slicing to operation and maintenance.

GUIDED INTERACTIVE OPERATION

5 steps: Print Setting- Open File - Layout - Support - Slice.

UVMP TECHNOLOGY *

Self-developed SHINING 3D technology, significant optimized printing accuracy.

200% OPTICAL EFFICIENCY

Optimized optical path configured to improve the optical efficiency to 200%; it only takes 25 minutes to print a full plate of 8 orthodontic models.

LINK BETWEEN IOS AND 3D PRINTER

Independently developed editing tool provides users with model editing functions, linking the scan and print process beyond expectation.

LAYER PREVIEW

Preview the sliced data in advance to ensure successful printing.

AUTOMATIC CALIBRATION

Automatic calibration ensures stable and consistent printing.

*UVMP stands for UV masked photopolymerization



PRINT YOUR DENTAL IDEAS

AccuFab-D1s

Dental 3D Printer

Fab Cure

Light Curing Box

Technical Specifications

AccuFab-D1s

Dimension (WxDxH)	394 x 406 x 755 mm
Weight	30 kg
Build Envelope (X/Y/Z)	144 x 81 x 160 mm
Print Speed	50 mm/h *
Print Accuracy	±0.035 mm**
Layer Thickness	25 μm, 50 μm, 100 μm
DLP Native Resolution	1920 x 1080, 1080 p
Material Option	Open
Interface	USB / Ethernet / Wi-Fi

Fab Cure

Dimension (WxDxH)	200 x 200 x 325 mm
Weight	6 kg
Turntable Diameter	165 mm
Maximum Part Height	160 mm
Operating Temperature	10~30°C
Power	DC24 V, 2.5 A, 60 W
Light Source	UV LED
Wavelength	405 nm
LED Power	30 W



* The print speed varies and is directly related to the different types of materials or layer thickness.

** Measured by a certain method under certain environment.

***Notice: SHINING 3D reserves the right to introduce modifications or alterations to any of the specifications and images used in this document.

AccuFab-D1s

Your Upgraded Printer

Based on years of experience in dental industry, the upgraded AccuFab-D1s offers users a more intuitive and user-friendly workflow with even faster print speed and better accuracy. With diverse resin material options, it can meet diverse demands in restorative, implant and orthodontic applications. This is the ideal printer solution for all dental customers wishing to enter into the era of digital production.

FAST PRINT SPEED

Featuring a large build volume of 144 x 81 x 160 mm and a fast print speed of up to 50mm/h, the AccuFab-D1s is able to print max. 4 arch models in an hour, multiple surgical guides in less than 30mins.

ULTRA HIGH ACCURACY AND DETAILS

Patented pixel to pixel distortion correction algorithm and full HD 1080p projector guarantee ultra-fine print accuracy and details.

INTELLIGENT PRINT

Integrated with advanced print software, the AccuFab-D1s supports intelligent support creation and “one-click” printing, providing user-friendly print experience with higher repeatable consistent accuracy.

LONG LIFETIME AND LOW COST

With long lifetime resin tank, the AccuFab-D1s reduces operation cost. The resin tank can be used for 100,000 layers of printing.



All-round Dental Printer

AccuFab-D1s can be applied in a wide range of applications, such as dental working model, wax-up, surgical guide, gingiva, customized impression tray, indirect bonding tray, etc.



Implant Model



Surgical Guide



Positioning Jig



Gingiva Mask



Implant Try-on



Ortho Model



Dental Model



Indirect Bonding Tray



Wax-up



Temp



Customized Impression Tray

Easy Post-Processing with Fab Cure

Fab Cure is recommended as the standard post-curing tool for AccuFab-D1s.*

EASY OPERATION

Put the parts in the box and rotate the knob to set the curing time.

UNIFORM EXPOSURE

A rotating turntable with 10r/min ensures uniform exposure during post-curing.

OPTIMUM MECHANICAL & FLEXURAL PROPERTIES

The Fab Cure maximizes the mechanical & flexural properties of the parts for further operation of dental workflows.



* The mechanical & flexural properties of print parts will be affected if you use other untested post-curing tools.

COST-EFFECTIVE 3D PRINTING SOLUTIONS

SHINING DENT

Material Options

SHINING DENT

Material Options

SHINING DENT features a series of resin materials independently developed by SHINING 3D. These resins can be applied in various dental printing applications, such as working model, ortho model, customized impression tray, surgical guide and gingiva mask.



GO DIGITAL WITH SHINING 3D



+1415-259-4787

1740 César Chávez St. Unit D.
San Francisco, CA 94124,
United States

+49-711-28444089

Breitwiesenstraße 28
70565 Stuttgart,
Germany

+86-571-82999050

No. 1398, Xiangbin Road,
Wenyan, Xiaoshan, Hangzhou, Zhejiang
China

 SHINING 3D

 www.shining3ddental.com

 sales@shining3d.com

V. DENT202109aEN

Copyright © 2014-2021 SHINING 3D. All Rights Reserved.