

# AccuFab-L4D 3D Printer

Lit Up For Dentistry



SHINING3DDENTAL.COM

# AccuFab-L4D

Multi- format Dental 3D Printer

AccuFab-L4D/L4K is the latest addition to the SHINING 3D family digital solutions. It is a large-format dental 3D printer developed completely in-house by SHINING 3D to make 3D printing solution more accessible to everyone. It brings users an exceptionally unique printing experience with its features like light-weight, large print size and user-friendly operation.



## Connecting the Future

### Link Aoralscan with AccuFab

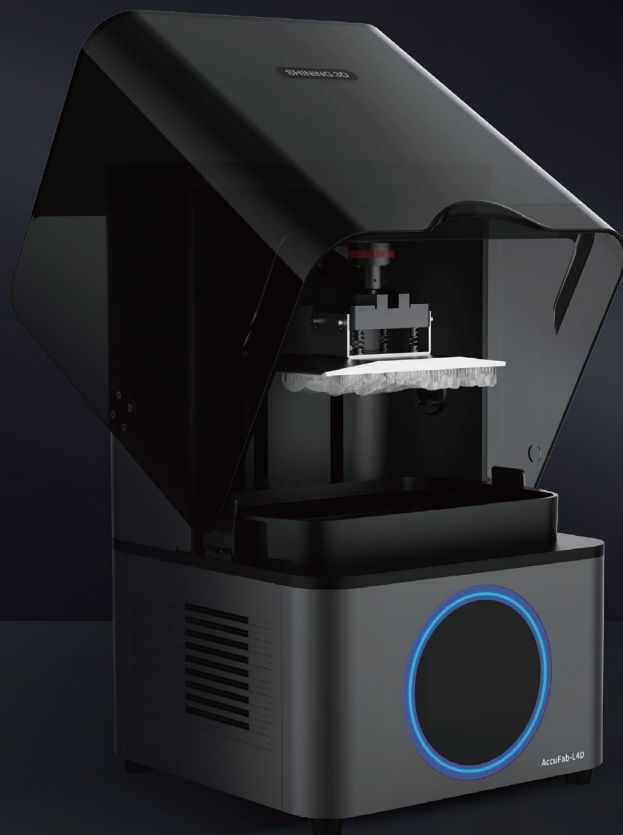
SHINING 3D intraoral scanner, 3D printer and dental material ecosystem provides exceptional experience in digital dentistry.

### AccuDesign

Life-time free upgrade model creator software that comes with AccuFab-L4D/L4K.

### Dental Cloud

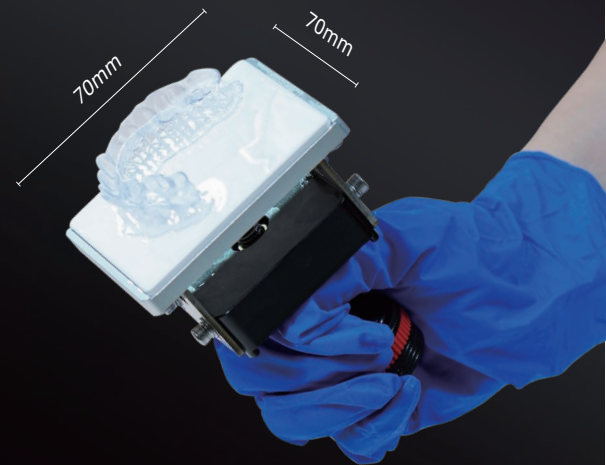
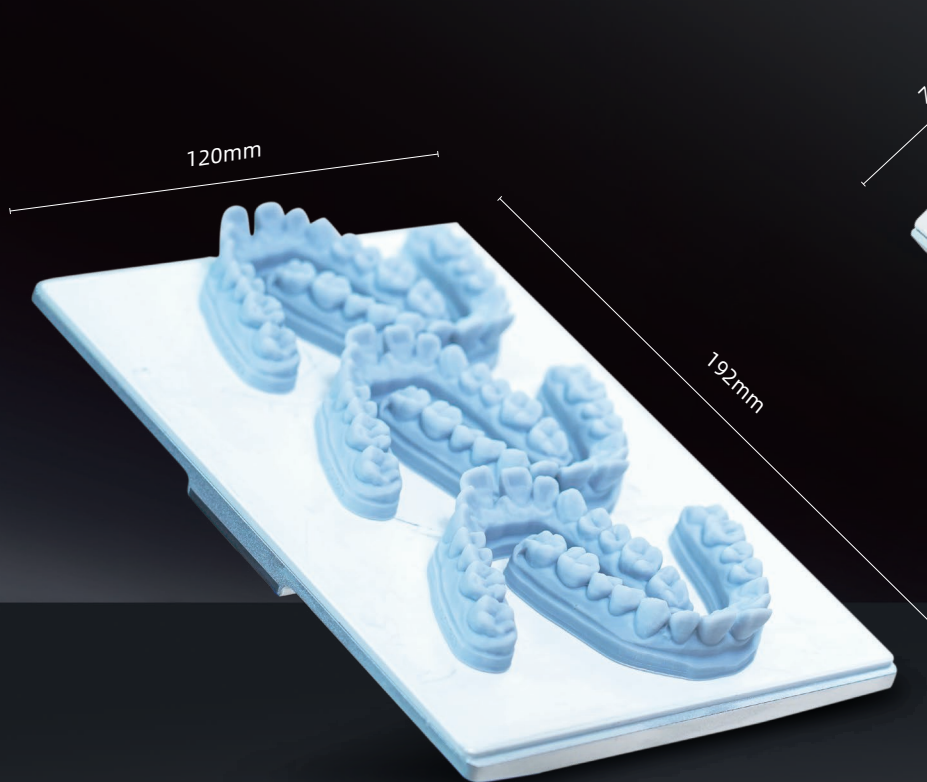
SHINING 3D's cloud data platform enables data transmission, making it convenient for data transfer and communication between clinics and dental labs.





## Variable Print Size, 4K Resolution

70\*70mm & 192\*120mm printing size and 4K resolution satisfy the demands of users for efficiency and details.





# Small Resin Tank

## Enhancing Accuracy and Reliability

### Introducing New Film Technology

Our innovative film technology, combining with a ceramic platform, ensures unparalleled printing accuracy and unwavering stability, eliminating residues and outliers.

### Exceptional Longevity

The compact resin tank boasts an impressive lifetime of up to 120,000 layers, allowing for extended printing sessions with numerous successful prints.

### Optimum size for chairside

With a minimum starting size of 200ml and a maximum of 350ml, our system is perfectly tailored for producing small yet high-value resin prints.

Small resin tank for  
AccuFab-L4D

- Size: 314 x 205 x 44mm
- Tank volume: min 200ml, max 350ml







# Small Ceramic Platform

## Enhancing Biocompatibility

Our biocompatible material has been meticulously engineered to provide robust support for Class II and higher-grade resins.

## Precision in Small-Scale Printing

Ideal for crown, bridge, and full arch printing. Our system excels in small-scale, high-value printing for chairside applications within clinical settings. The small ceramic platform can print up to 16 posterior crowns or 2 full arches, meet the daily use for clinic.

## Residue-Free Printing

The smooth surface of our technology prevents excess residue from adhering, ensuring a hassle-free and efficient cleaning process.

## Superior Durability

Extended lifespan of over 2 years compared to aluminum platforms. Our high-hardness platform offers both model printing stability and greater resistance to damage during cutting operations, guaranteeing a longer-lasting performance.



### Small Ceramic Platform for AccuFab-L4D

- Size: 86 x 80 x 100mm
- Ceramic size: 80 x 80mm
- Printable area: 70 x 70 x 150mm



# Reliable Performance

## Industrial Grade Optical

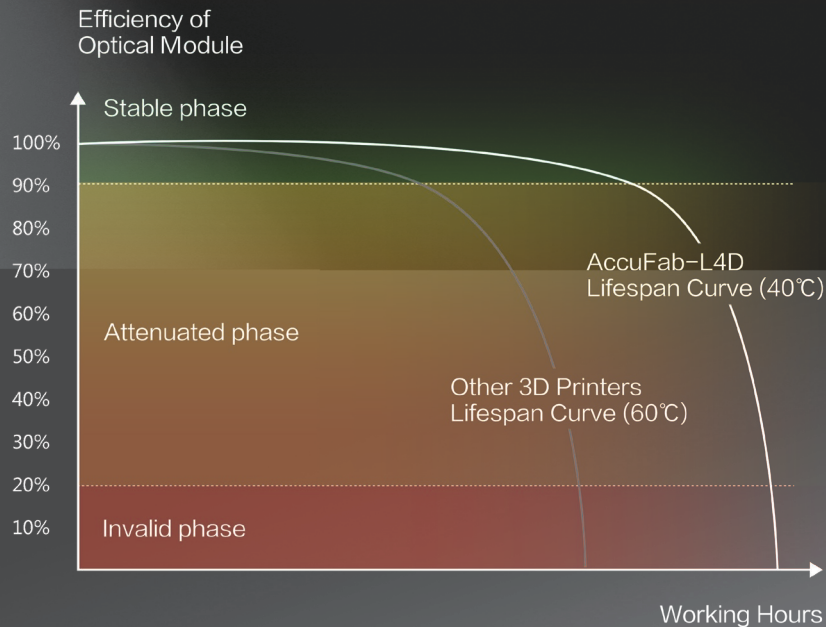
High quality optical module with long-life components.

## State-of-the-Art Robustness

AccuFab-L4D's 5 million layers tested in real dental clinic condition provides state-of-the-art reliability.

## District Cooling System

DCS (District cooling system) maintains the temperature of working screen under 40°C, while extending the 3D printer lifespan significantly.





# Unparalleled Accuracy

## Accurate Precise

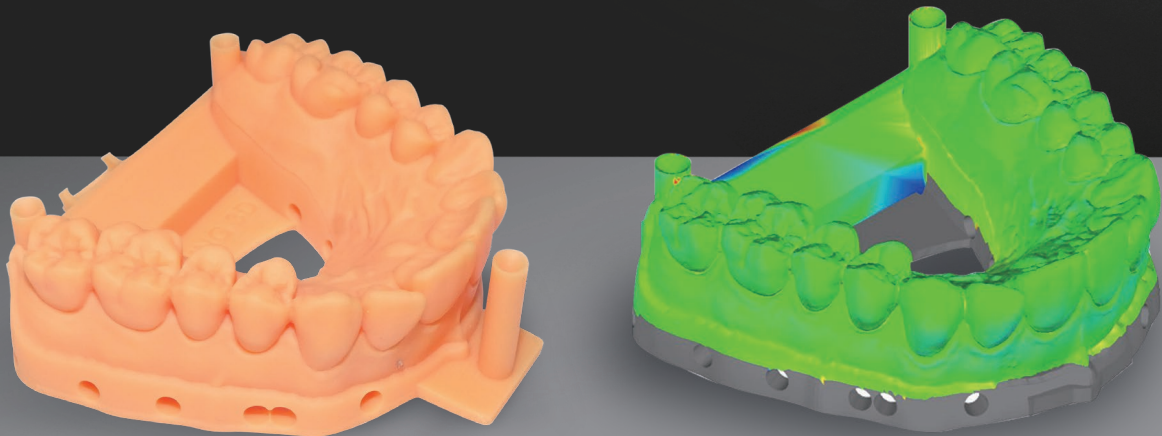
Over 96% of the surface points fits within  $\pm 0.1\text{mm}$

## Outstanding Uniformity

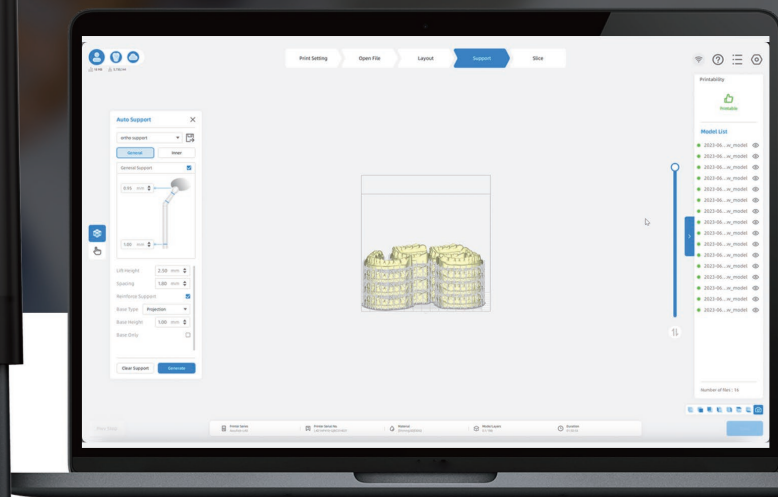
High luminance uniformity achieves up to 90%

## Beyond the Limits

Provides not only the possibility to obtain features smaller than a pixel, but also superior surface finish.











# Multiple Material Options

## Shining Dent

Shining Dent covers a wide range of materials for dental 3D printing applications.

## Certified 3<sup>rd</sup> Party Material

SHINING 3D partners with industry leading brands in dental material, providing more possibility and flexibility.

keystone  
INDUSTRIES

Graphy

+ SAREMCO

NextDent

DETAX

PacDent  
Passion for Excellence

BEGO

DMG

dentona

BASF  
We create chemistry

Dreve

pro3d  
medica

LIQCREATE





# Professional Slicing Software

## Built-In Design Software

Shining Design Modules including CreSplint, CreIBT, AccuDesign, CreTemp has been built into Accuware for a ease to use and a smooth process.

GO to PRINT, models can be automatically imported and work through an AI process.

## Magic Click

Allows multiple one-click printing on different dental applications, such as restorations, C&B, splint, surgical guide, orthodontic models, etc. Providing intelligent AI algorithm for auto layout, auto support and auto slice.

## Printer On Cloud

Built-in access for Dental Cloud in Accuware. Monitor and Control your printer anywhere, anytime.





# Advanced Printing Software

## Activation in Printer

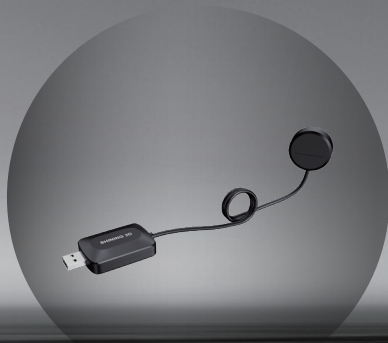
What you need to do to activate a printer is just a scan of the QR code.

## Levelling Automation

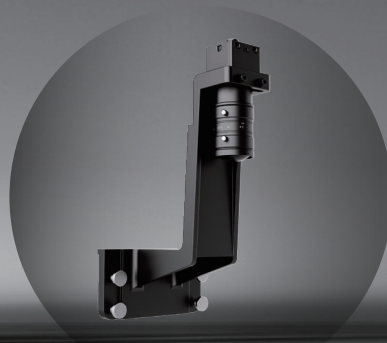
More detailed and operation guide showing on printer for a clearer view on accurate levelling.

## Light Uniformity & Power Meter Adjusting

New version Fabware has upgraded to add the light uniformity and power checking function in printer, increasing the longevity of the printer and provides a more accurate printing under long time use.



( optional )



( optional )



# TECHNICAL SPECIFICATIONS

## AccuFab-L4D

Printer Size	360 x 360 x 530 mm
Printer Weight	about 19 kg
Print Volume (x/y/z)	70 x 70 x 150 mm / 192 x 120x 180 mm
Resolution	3840 x 2400(4K) Px
Print Speed	Max 50 mm/h ( depends on layer thickness and materials )
Layer Thickness	50/75/100 μm
Accuracy	± 50 μm
Connectivity	USB/Wi-Fi/Ethernet

\*Notice: SHINING 3D reserves the right to introduce modifications or alterations to any of the specifications and images used in this document.