



Dental Materials

Laboratory and Clinical





CONTACT US

Associated Dental Products Ltd

Kemdent Works, Purton
Swindon, Wiltshire
SN5 4HT, UK

t: +44 (0)1793 770256
e: sales@kemdent.co.uk
www.kemdent.co.uk



KemdentUK



Kemdent



Kemdent

CONTENTS

1

Contents
About Us

2

Modelling Waxes

3

Wax Based Products

4

Special Trays & Baseplates
Lab Putty & Pumice

5

Denture Acrylics

6

Lab Essentials - Plaster Solvent, Pumice Cleaning
Solution. Wax & Plaster Knives

7

Orthodontic Wax & Bite Registration Wax
Articulating Paper

8

Impression Materials
Finishing & Polishing Materials

9

Prophylaxis Paste
Cements & Filling Materials

10

100 Years of Quality and Reliability

ABOUT US

Kemdent is the globally recognised brand of Associated Dental Products Ltd, a UK manufacturer of Dental Materials. The 31st July, 2022 marked the 100th anniversary of Associated Dental Products Ltd.

As a family run business we value the relationships we build with our customers. The company has always responded to the requirements of dentists and dental technicians around the world. One hundred years on the company has evolved to be a global leader in the manufacturing of dental wax materials and we are still proud to manufacture an unparalleled range of essential dental laboratory and clinical products including denture base acrylics, cements and prophylaxis paste that suit the demands of an ever-changing competitive industry. Dental professionals value Kemdent products because they can rely on consistent quality and results.

The company continually invests in more efficient manufacturing techniques, maintains a skilled workforce and applies continuous improvement processes to ensure the quality and reliability of its products. As a result more products are sold to more customers globally because Kemdent manufactures exceptional products at prices which compete with manufacturers around the world.

Our global network of importers and distributors is always expanding and we look forward to continued success in the future.



Front Cover image by
Dent8 Dental Laboratory Ltd
Blackpool, UK



A leading range of precisely graded and controlled waxes, famous throughout the world. Each wax has a tightly controlled softening profile designed to suit the most efficient working techniques and local climatic conditions. These waxes comply with the current version of the ISO 15854 standard, are CE and UKCA marked and registered with the FDA.

PROPERTIES

Will not irritate oral tissues. No unpleasant odour or flavour. Softens without becoming flaky or crumbly and without adhering to fingers. Trims easily and cleanly. Shows a smooth glossy surface after gentle flaming.

	ISO: 15854		Softening Temperature	Economy Grade	Colour				Sheet Size <small>All waxes are 1.5mm thick A: 187mm x 98mm B: 152mm x 77mm</small>
	Type 2 Class 1 Soft	Type 2 Class 2 Hard			Translucent Pink	Bright Pink	Dark Pink	Red	
Anutex	●		35°C - 41°C		●				A + B
Anutex Eco	●		35°C - 41°C	●	●				A
Kemdent V Regular*	●		35°C - 41°C		●				A
Tenatex	●		36°C - 42°C			●		●	A + B
Tenatex Eco	●		36°C - 42°C	●		●		●	A
College Wax	●		36°C - 42°C	●				●	A
Astynax		●	39°C - 42°C					●	A
Tenacatin		●	40°C - 43°C			●			A
Anutex HS		●	41°C - 45°C					●	A + B
Tenasyle		●	41°C - 45°C			●			A
Kemdent V Hard*		●	41°C - 45°C		●				A



WATCH THE VIDEO

ANUTEX TOUGHENED WAX

Kemdent's most popular European wax. It has excellent handling qualities and is the best choice for high-quality work.

Packaging: 500g box, 2.5kg box, 30 x 500g outer, 6 x 2.5kg outer, 20kg pack. 5lb box

"We have been using Anutex and Anutex High Stability Modelling Wax from Kemdent for about 40 years. We appreciate the latter for its high strength, which provides a better base for dentures. We have never needed to use any other brand." **The Romford Denture Lab, UK**



ANUTEX HS - HIGH STABILITY TOUGHENED WAX

A versatile summer wax, stable across a wide range of temperatures and in the mouth. A harder wax with great handling properties.

Packaging: 500g box, 2.5kg box, 30 x 500g outer, 6 x 2.5kg outer, 20kg pack. 5lb box



ANUTEX ECO - TOUGHENED WAX

An economic alternative to Anutex, manufactured environmentally with 30% reduction in CO2 emissions.

Packaging: 500g box, 2.5kg box, 30 x 500g outer, 6 x 2.5kg outer, 20kg pack



KEMDENT V MODELLING WAX

Kemdent V Modelling Wax is the replacement for Vertex Wax.

Available in Regular and Hard

Packaging: 1kg box, 15 x 1kg Outer



TENATEX TOUGHENED WAX

Available in Red or Pink. A stable, high quality wax popular in warmer climates. The leading brand in Southern Europe, the Middle East and North Africa.

Packaging: 500g box, 2.5kg box, 30 x 500g outer, 6 x 2.5kg outer, 20kg pack, 5lb box



TENATEX ECO TOUGHENED WAX

An economic alternative to Tenatex, manufactured environmentally with 30% reduction in CO2 emissions.

Packaging: Pink & Red - 500g box, 2.5kg box, 30 x 500g outer, 6 x 2.5kg outer, 20kg pack.



COLLEGE WAX

An economic modelling wax manufactured for Universities and Colleges. Ideal for training. It is a flexible, all weather wax.

Packaging: 500g box, 2.5kg box, 30 x 500g outer, 6 x 2.5kg outer



ASTYNAX MODELLING WAX

A high performance, very stable hard wax. Excellent temperature stability

Packaging: 500g box, 2.5kg box, 30 x 500g outer, 6 x 2.5kg outer, 20kg pack



TENACATIN TOUGHENED WAX

A high performance, very stable wax for warmer climates.

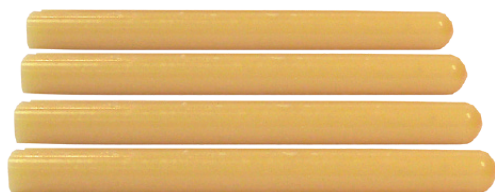
Packaging: 500g box, 2.5kg box, 30 x 500g outer, 6 x 2.5kg outer, 20kg pack



TENASYLE MODELLING WAX

A high performance summer wax. Sets hard but flexible to work with.

Packaging: 500g box, 2.5kg box, 30 x 500g outer, 6 x 2.5kg outer, 20kg pack



STICKY WAX MODEL CEMENT

Used as wax glue. Known as model cement, melts easily, easy to remove by reheating, no residue. Hard and brittle at room temperature.

Colour: Original

Size: 100mm x 9mm approx

Packaging: 70g box, 500g box



WAX BITE RIM BLOCKS

These time-saving occlusal rims are available in straight blocks or pre-curved rims. Occlusal rims eliminate the risk of porosity (associated with hand rolled sheets of modelling wax). Kemdent Wax Bite Rim Blocks enable a rapid set up, hold teeth in place firmly and suit a wide range of temperature and climatic conditions.

We always recommend warming in hot water for best results.

Colour: Regular Pink

Packaging: 50 per box regular pink curved
75 per box regular pink straight



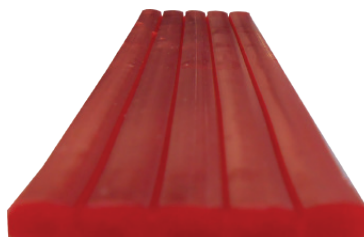
PERIPHERY WAX

Used to extend the periphery edge of an impression tray, it has a soft and easily moulded consistency which provides a complete and accurate impression of the mouth.

Colour: White

Size: 185mm x 6.5mm approx

Packaging: 78 sticks per box



BEADING WAX

Ideal wax for beading around the edge of a functional impression prior to casting. Ensures a final denture will have a good peripheral seal.

Colour: Dark Red

Sheet size: 300mm x 7mm x 3.5mm approx

Packaging: 75 per box



CARVING BLOCKS

An essential aid to help student clinicians and technicians learn the detail of tooth morphology. Easy to carve and shape.

Colour: Ivory

Size: 13.5mm x 13.5mm x 33mm approx

Packaging: 30 per box



TOOTH CARDING WAX

A general purpose wax, used to mount teeth. Hard and pliable.

Colour: Red - Hard

Sheet size: 187mm x 88mm x 2.5mm approx

Packaging: 500g box



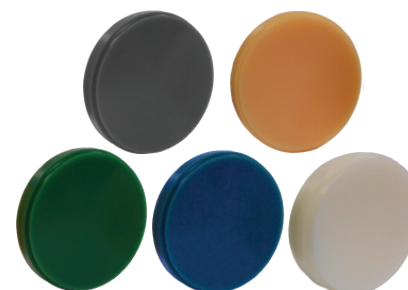
BOXING IN WAX

A soft pliable wax which adheres to impression materials. Used to box in impressions and contain the plaster when pouring a model.

Colour: Deep Red

Sheet size: 300mm x 40mm x 1.5mm approx

Packaging: 30 per box



CAD/CAM BLOCKS

Used for the fabrication of wax models, the Wax Blanks burn out without a trace. Not for intra-oral use. Used for up to 30 units. Leaves no residue and has a low co-efficient of thermal expansion. Not soluble in water.

Compatible machines: Weland, ZirkonZahn, High Speed Dental, Armann Girbach Ceramill

Colour: Grey, Beige, Green, Blue, White Opaque

Diameter: 98.5mm. **Thickness:** 10mm, 14mm, 16mm, 18mm, 20mm

Drop melting point: 100°C-130°C

Packaging: 1 Wax Blank per box

Kemdent's modern manufacturing allows us to produce any wax shape. Need something specific?

Contact sales@kemdent.co.uk

SPECIAL TRAYS & BASEPLATES LAB PUTTY & PUMICE

KEMDENT LIGHT CURE TRAYS

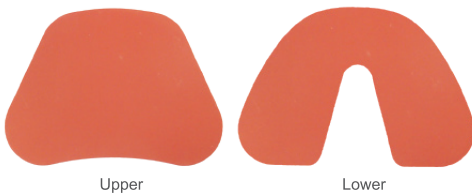
Allow easy fabrication of custom impression trays. Features an infinite working time and is non-sticky, plus, easy to adapt and trim to ensure there is less wastage compared to other products. Can then be cured quickly under halogen and UVA light in just a few minutes. At this point, becomes extremely rigid and dimensionally stable for minimal risk of distortions and maximum chance of highly accurate impression trays. Minimum shrinkage. Slump resistant useful when forming a handle. Fresh peppermint fragrance.



Colour: Aqua Green or Pink
Packaging: 50 per box

"We have used the Light Cure Trays from Kemdent for around the past seven years. The main features we like about these are that they are very adaptable, which makes it easy to mould around any type of mouth that comes in. We also like that it only takes a matter of minutes to cure the trays in a light box."

Devon Dental Laboratories, UK - Andrew Smale



PERFECTA PINK BASE PLATES

Perfecta Pink Base Plates offer the maximum accuracy at the try-in stage of a denture.

Colour: Pink
Thickness: 1.3mm approx
Packaging: 12 per box, 100 per box



KEMDENT SPECIAL TRAY BLANKS

Quick and easy to adapt by flame or hot water to produce individual custom trays for the most accurate impressions.

Colour: Green
Thickness: 2.25mm approx
Packaging: 12 per box, 72 per box, Plain extra large upper



KEMSIL PRECISE LAB PUTTY

Addition Cured Lab Putty, Sets in 5 minutes, 70% less shrinkage than condensation-cured putties, used for production of copy denture moulds and processing denture repairs, construction of partial dentures and cold curing CoCr saddles. No hazardous activator required. Shore A 90 hardness

Packaging: 1.5kg pack, 4.5kg pack



ORAL PUMICE

High quality pumice powder for polishing. Available in grades: X-Fine Oral, Medium and Coarse

Packaging: 500g, 5kg, 50kg



ACRON EXPRESS - QUICK DOUGH & ACRON DUO HEAT CURE DENTURE BASE ACRYLIC

Heat curing denture base materials which form a solid base for full and partial dentures. Acron Duo and Acron Express produce dentures with exceptional high strength and high lustre finish, which are easy to trim and polish. Acron Duo has a finer grain size.

Both products comply with ISO 20795-1

Packaging: Powder 1kg, 3kg, 50kg.

Available in a variety of shades with or without veins

Acron Universal Liquid 500ml, 1L, 5L, 25L



ACRON HI - HIGH IMPACT HEAT CURE DENTURE BASE ACRYLIC

Acron Hi acrylics use multi matrix technology to produce dentures that are resistant to breakage and fracture. Exceptional aesthetics. Ideal for use with injection moulding systems. Complies with current ISO 20795-1 standard

Packaging: 42g/20ml, 250g/110ml, 1kg/500ml, 3kg, 50kg.

Available in Original Veined and Light Pink Veined

Acron Hi Liquid 1L, 5L, 25L.



"The Acron Hi from Kemdent is the best of its kind on the market. It packs down really easily, and is simple to handle with plenty of time to work with it. The grinding of the material is very good as well, while the polishing is a dream. Compared to others I have tried, the colour is also great. I would recommend the Acron Hi to colleagues and have done so several times."

A highly experienced dental technician from Harpenden, United Kingdom



WATCH THE VIDEO A timed comparison between Acron Hi - Hi Impact Denture Base Acrylic and Acron Express Heat Cure Denture Base Acrylic



WATCH THE VIDEO How to use Simplex Rapid Repair Cold Cure Acrylic to repair a denture

	Heat Cure Acrylic			Cold Cure Acrylic		
Powder	Acron Express	Acron Duo	Acron Hi	Simplex Rapid	Simplex Hi	Orthodontic Acrylic
Liquid	Acron Universal	Acron Universal	Acron Hi	Simplex Rapid	Simplex Rapid	Orthodontic Liquid
Dough Time	7-15 minutes	20-30 minutes	10-20 minutes	3-5 minutes	30 seconds	3-5 minutes
Work Time	< 30 minutes	15-20 minutes	20 minutes	For best results cure in hydroflask at 40°C for 10-20 minutes at 30psi. Remove carefully, trim and polish. Will also self cure in 20 minutes		
Curing	Immerse in boiling water. Bring back to the boil slowly. Boil 20 minutes		Immerse in cold water. Bring to the boil 90 minutes. Boil 30 minutes or longer for best results			

* All times are approximate and will vary dependent on temperature



SIMPLEX RAPID REPAIR & SIMPLEX HI - HIGH IMPACT COLD CURE REPAIR ACRYLIC

Produce extremely durable additions, repairs and relines to existing dentures. Simplex Hi is designed for high impact strength dentures. Both products comply with ISO 20795-1. Available in a variety of shades with or without veins

Packaging: Simplex Rapid Repair 225g, 1kg, 3kg, 50kg. Liquid 150ml, 500ml, 1L, 5L, 25L

Packaging: Simplex Hi - High Impact 225g
Use with Simplex Rapid Liquid



KEMDENT ORTHODONTIC COLD CURE POWDER & LIQUID

Self Curing, allows easy construction of orthodontic appliances, Clear Orthodontic Powder (available in Fine and Coarse) and Orthodontic Liquid.

Packaging: 1kg, 3kg, 50kg, 500ml, 1L, 5L, 25L



KEMDENT ORTHODONTIC RESIN GLITTER

Glitter Acrylics - Aesthetic orthodontic resin, popular with younger patients. A range of colour stable colours and a splash of glitter with exceptional clarity.

Available in a variety of shades

Packaging: 50g, Liquid 150ml

PUMICESAFE UNIVERSAL CLEANER

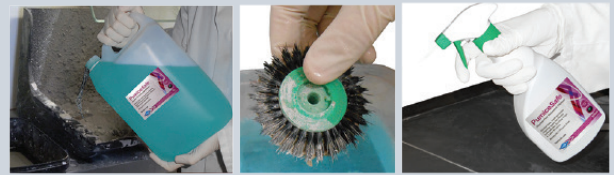
Use in a pumice tray in place of water to produce a minty fragranced micro-organism free slurry or as a soak for lathe brushes to reduce the risk of burning the acrylic during polishing. As the soak becomes contaminated it changes colour from pale blue to dark green, a clear indicator the soak needs changing. Alcohol free with a glycerine and emollient content it does not irritate a technicians hands, it can also be used as a non greasy table-top cleaner.

Fragrance: Mint
Packaging: 500ml, 5L



"It's good to have a product that will keep our pumice safe. It has a pleasant minty smell and offers peace of mind that our pumice is clean. I have also had a very good experience dealing with Kemdent for many years now. Everyone that I have dealt with has been friendly and helpful. I would certainly recommend PumiceSafe Universal and Kemdent to other labs."

Steve Burrett from S B Denture Design Ltd , United Kingdom



Ready to use

Pre-soak lathe brushes

Multi-purpose

PLASTERSAFE - PLASTER SOLVENT & TRAY CLEANER

A ready to use water based, economical solution to aid the safe removal of dental plaster and stone from the fitted surface of a denture including hard to reach areas. Simply remove any excess plaster or alginate from the denture then immerse in PlasterSafe for as long as required. Alternatively use an Ultrasonic Bath. The plaster dissolves and can be rinsed off easily using clean water.

Packaging: 1L, 5L

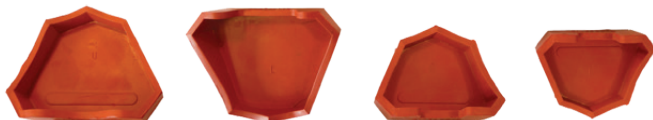


PLASTER SEPARATOR LIQUID TIN FOIL

Quick and reliable separating medium, forms a tough thin skin over the plaster mould. Imparts a clean smooth surface to the cured denture.

Colour: Translucent Pink

Packaging: 450ml, 1L, 5L, 22.5L



Extra Large Upper

Extra Large Lower

Large Upper

Large Lower

RUBBER MODEL FORMERS

Available in extra large upper, extra large lower, large upper, large lower. Tough quality rubber moulds which make model making quick and reduce mess.

The plaster is contained within the mould so the model is easily removed. The preformed shape reduces trimming.

Colour: Red

Packaging: Sold individually



201 Wax Knife Flat End

203 Wax Knife Spoon End

102 Plaster Knife Dumpy

104 Plaster Knife Gritman

303 Plaster Mixer Spatula Curved

304 Plaster Mixer Spatula Flat

308 Plaster Spatula Flexible

WAX KNIVES, PLASTER KNIVES, PLASTER MIXERS & SPATULAS

A variety of shapes and sizes cater for various tasks. Each knife and mixer can be sterilised by gamma irradiation. The blades are made of stainless steel whilst the handles are black polypropylene for extra strength. The taper ground hardened and tempered blades allow flexibility for safe and comfortable use.

KEMDENT ORTHODONTIC WAX

Kemdent Orthodontic relief wax is a soft, gum protector for children and adult patients with braces. Protecting gums from the metal edges of braces.



NEW - Kemdent is proud to introduce Ortho Wax in a recyclable tin. 9 million tons of plastic waste ends up in our ocean every year. Tin can be recycled an infinite number of times whilst still maintaining its properties, helping to reduce energy use, emissions and waste ending up in landfill.



Flavours: Plain, Mint
Packaging: 50 Tins/box



ALMINAX RITE BITE INDEX

Ready shaped to mouth, reinforced around inner edge. A proven bite registration material, dense yet easily softened, stable at room temperature.

Colour: Silver Grey Softens at 55°C

Thickness: 2.4mm approx

Packaging: 30 per box/ 24 reinforced + 6 plain



ALMINAX BITE WAX

A proven bite registration material, dense yet easily softened bite wax, stable at room temperature.

Colour: Silver Grey Softens at 55°C

Sheet size: 143mm x 73mm x 2.4mm approx

Packaging: 250g, 500g



ALMINAX WAX FULL ARCH

Ready shaped to mouth, proven bite registration material, dense yet easily softened bite wax, stable at room temperature.

Colour: Silver Grey

Thickness: 2.4mm approx
Softens at 55°C

Packaging: 20 per box, 40 per box



ALMINAX PINK EXTRA HARD/ BEAUTY WAX

Extra Hard bite registration wax, brittle at room temperature, exceptionally high resistance to distortion.

Colour: Pink

Sheet Size: 175mm x 80mm approx

Thickness: 2mm approx

Packaging: 500g



DETEX ARTICULATING PAPER

Provides clear sharp mark on natural or artificial teeth to show where bite adjustment is necessary. Stitched interleaving between sheets keeps paper in perfect condition until needed and prevents curling. Special vegetable wax coating, pure colouring ingredient does not stain lips.

Colour: Blue

Sheet size: 120mm x 25mm x 40 micron thick, double sided

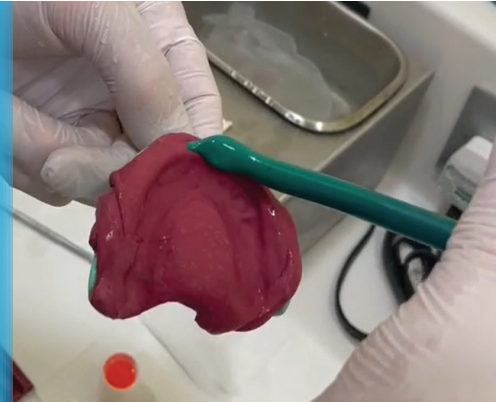
Packaging: 12 books per box, 12 sheets per book

IMPRESSION MATERIALS, FINISHING & POLISHING MATERIALS

IMPRESSION MATERIALS

A good impression created using excellent materials benefits everybody involved in the treatment journey. Dentists can save time, technicians will have more accurate information to create precise restorations and patients will receive fast, high-quality care.

Kendent manufacture a range of thermoplastic impression materials, made from environmentally friendly natural resins, which soften when heated and harden when cooled. A major advantage of impression compound materials is that they are very easy to adjust. Alterations to the impression can be made by removing, replacing or adding material until a satisfactory result is obtained. The cakes are for full or partial impressions, particularly in edentulous cases prior to the preparation of a special tray.



KEMKAT IMPRESSION COMPOSITION

KemKat is suitable for copper band impressions and for adding to an impression tray. The high viscosity also makes them ideal when recording the full depth of the sulcus. The convenient shape allows you to break off only what you need for partials or additions, creating less waste.

Packaging: 7 cakes per box



KEMCO GREEN TRACING STICKS

Kendent Impression Green Compound Sticks capture every part of the sulcal detail, boosting impression accuracy with ease. Perfect for border extensions on impression trays, these versatile products can also be utilised to modify dental trays, building up where teeth have been extracted to ensure that these spaces don't detract from the necessary detail capture.

Also available in Red, minimum order applies

Packaging: 15 sticks per box



GODIVA / KEMCO CAKES

Made from a thermoplastic material that softens when heated and hardens when cooled, these impression cakes are able to create an extremely accurate full or partial impression. Furthermore, unlike other impression materials on the market, Godiva Red Impression Cakes are very easy to adjust, you can simply remove, replace or add more material until the desired result is achieved.

Available in Red, White & Pink

Packaging: 5 cakes per box

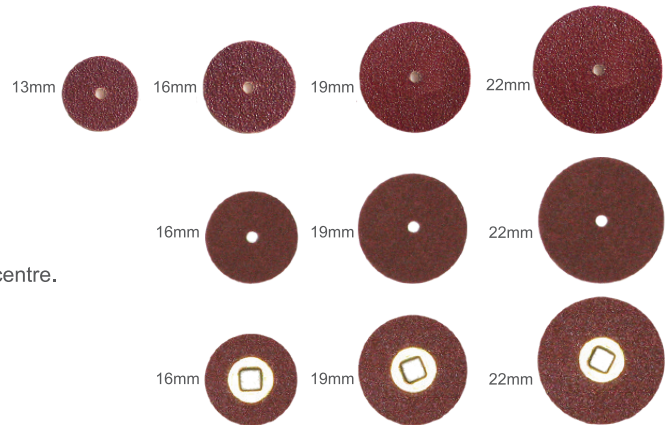
RUWA MOISTURE RESISTANT POLISHING DISCS

Ruwa pinhole moisture resistant polishing discs.

Grits: xxfine, xfine, fine, medium, coarse.

Disc size: 13mm, 16mm, 19mm, 22mm

Packaging: Ruwa 100 per box (10 boxes per outer)



KEMDENT POLISHING DISCS TYPE A & TYPE B

Kendent polishing discs are available in Type A pinhole and Type B metal centre.

Grits: xfine, fine, medium, coarse, xcoarse

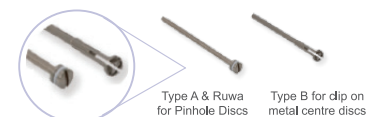
Disc size: 16mm, 19mm, 22mm. Some grits not available in all sizes

Packaging: Type A 100 per box (10 boxes per outer) Type B 50 per box (10 boxes per outer)

KEMDENT & RUWA MANDRELS

Kendent and Ruwa mandrels are for use with polishing discs and wheels.

Packaging: Type A long pinhole, Type B Long metal centre



MATRIX STRIPS & FINISHING STRIPS

Matrix Strips are clear polyester strips with colour coded ends. Use to form a matrix for composites, compomers and glass ionomer cements.

Available as curved or straight and in four widths 6mm (Green), 8mm (Blue), 10mm (Red), 12mm (Yellow)

Packaging: 200 per box, 10 boxes per outer



Finishing Strips are abrasive strips for interproximal finishing

Packaging: 100 per pack



PROPHYLAXIS PASTE, CEMENTS & FILLING MATERIALS

PROPHYLAXIS PASTE

A unique Kemdent formulation, clean and easy to use. The special viscosity ensures that the paste clings to the prophylaxis brush and will not spatter. Two grits are offered, medium for normal use and heavy duty providing greater removal rate. Does not contain fluoride.



Flavours: Original, Bubblegum, Spearmint, Strawberry
Packaging: 200g



DIAMOND CARVE - GLASS IONOMER CEMENT

A unique material with a performance unmatched by any conventional Glass Ionomer Cement. A much higher compressive strength than most conventional glass ionomers (350MPa).

Extremely durable, hard wearing, strong and versatile, resistant to saliva. A real alternative to posterior composites and amalgam.

Chemical Set: Carve begins to set in 2 minutes, 15 seconds. Adheres to dentine and enamel, releases fluoride, is radiopaque, no shrinkage and has a rapid snap set. Complies with ISO 9917-1.

Packaging: 10g/7ml, Shade A3. Other pack sizes/ shades available with minimum order volumes applied.



DIAMOND RAPID SET CAPSULES

Extremely durable, strong and hard wearing. Versatile and no shrinkage. A real alternative to posterior composites and amalgam, ideal for use when speed and reliability is of essence. Resistant to saliva, adheres to dentine and enamel. It is radiopaque and has a rapid snap set.

Shade: A3
Gun and activator supplied by Kemdent.
Complies with ISO 9917-1.

Packaging: 20/box



ALGANOL & ZONALIN

Alganol powder / liquid and Zonalin powder/ liquid are fast setting Zinc Oxide Eugenol cements. Alganol and Zonalin are used for routine cavity linings under amalgam and silicate restorations, as a temporary filling which can be left for several weeks, pulp capping to protect pulp against thermal change and acid irritation of overlying restorative cements and as a temporary seal for medicament dressing.

Alganol and Zonalin working time: (after mixing of 1 minute)
1 minute 30 seconds plus a setting time of 3 minutes - 7 minutes at 37°C.

Complies with ISO 3107

Packaging: Zonalin: Powder 28g, Liquid 10ml
Alganol: Powder 90g, Liquid 30ml.



ZINC OXIDE & EUGENOL B.P

Zinc Oxide Powder and Eugenol B.P. Liquid meet the British Pharmacopoeia standard. When mixed together Zinc Oxide Powder and Eugenol B.P. have an extended working time and the setting time is < 10 minutes in an oral environment.

Zinc Oxide Powder and Eugenol B.P. Liquid are used for routine cavity linings under amalgam and silicate restorations, as a temporary filling which can be left for several weeks, pulp capping to protect pulp against thermal change and acid irritation of overlying restorative cements and as a temporary seal for medicament dressing.

Complies with ISO 3107

Packaging: Zinc Oxide B.P Powder 28g, 150g, 454g.
Eugenol B.P Liquid 30ml, 150ml

In July 1922 Associated Products was incorporated by Mr Harold Osborn, the factory was based in West Ealing, London. Associated Products held registered trademarks for Tenasyle, Astynax, Tenatex and Tenacetin Modelling Waxes.

1922



1950

1952: 'Anutex' trademark registered by Associated Dental Products.

1956: The Suez Crisis threw the world into panic and created an economic crisis in Britain. It was feared that the loss of oil supplies and price increases would cause supply problems for the dental wax industry, a year's worth of orders were taken in just four months.

1961: Mr Amos Cakebread became director of Associated Dental Products.

1990



1991: The company celebrated its first 50 years at the Purton site, this coincided with the completion of a new building.

1997: Associated Dental Products Ltd gained full accreditation to ISO9001, establishing Associated Dental Products Ltd's commitment to quality.

1998: Tony Reed, Chief Executive of the British Dental Trade Association, cut the ribbon to officially open Associated Dental Products Ltd's new premises, including 18,000 sq feet of new offices and manufacturing space.

1999: Mr Graham Mayoh joined Associated Dental Products. During the 90's, Kemdent took ownership of Acron and Simplex denture acrylic brand and successfully launched Diamond Glass Ionomer Cement.

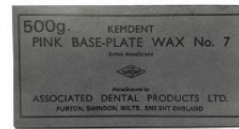
2010

2012: Mr Graham Mayoh took over sole ownership of Associated Dental Products Ltd and recognised the need for investment in manufacturing process. Continuous improvement of the wax production line meant the company can now produce 1.5 tonnes of wax a day.

2012: The first new wax production line was introduced followed by a second line in 2019.

2017: The Directors founded 'Kemdent Limited' in Kinsale, Ireland to act as the company's EC REP following the UK's exit from the EU.

2019: Company achieves certification to ISO 13485:2016.



1940

During World War II, the sustained campaign of aerial bombing wreaked havoc on London's industrial and residential sectors, causing enormous destruction.

1940: The factory had been severely damaged. The decision was made to source new premises as soon as possible and to leave London.

1941: The company relocated from London to the Wiltshire village of Purton.

1942: Change of name with Companies House to Associated Dental Products Limited.

1945: 'Zonalin' trademark registered.



1970

1970: Mr Gerald Hatton set up a company called Precious Metal Techniques, based in London and specialising in Crown and Bridge products.

1976: Associated Dental Products bought out Precious Metal Techniques. Mr Donald Cakebread became joint Managing Director with Mr Gerald Hatton.

2000

2002: Kemdent's first website was built. This was the first website in the dental sector in the UK offering detailed technical and health & safety information on all products.

2004: Mr Graham Mayoh and Mr Gary Squires took ownership of Associated Dental Products Ltd.



2020

2020: The Covid 19 pandemic impacted businesses all over the world. Associated Dental Products Ltd manufactured essential dental products using safe working practices. Following vaccine roll out, global demand for dental products increased and the company bounced back successfully.

2022

2022: Associated Dental Products Ltd is owned and run by the Mayoh family, alongside a skilled workforce the company continues to produce world leading dental materials, winning awards for exporting and innovation.





Quality and Reliability



ASSOCIATED DENTAL PRODUCTS LTD

Kemdent Works, Purton
Swindon, Wiltshire
SN5 4HT, UK

t: +44 (0)1793 770256
e: sales@kemdent.co.uk

WWW.KEMDENT.CO.UK



FIND YOUR LOCAL DISTRIBUTOR



WWW.KEMDENT.CO.UK