

**For information and registrations:**

**Export Sales Department**

Phone: +39.055.3044620

Fax: +39.055.304405

export@leone.it

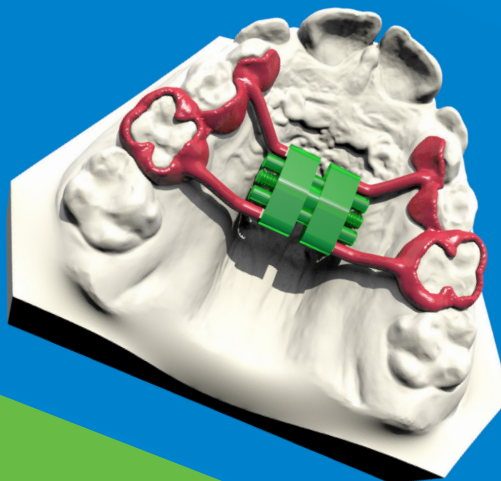
Schedule: 9:30/16:30

***In presence tuition-free event***

***Places on a first come first served basis***



ISTITUTO STUDI  
ODONTOIATRICI



# 3DLeone Designer

The first software with a  
workflow totally dedicated  
to CAD-CAM expanders



Centro Formazione



**Segreteria ISO**

Via P. a Quaracchi 48  
50019 Sesto Fiorentino - FIRENZE  
tel. 055 304458  
fax 055 304455  
email: iso@leone.it  
[www.leone.it/iso](http://www.leone.it/iso)

**FLORENCE  
NOVEMBER 24  
2023**

**ODT. TOMMASO  
BRIGANTI**

**ODT. GIACOMO  
BARTOLINI**

The course aims to enable the understanding of the 3DLeone Designer software and its advantages in a fully digital workflow within a dental laboratory.

3DLeone Designer is the software based on an easy, fast and guided workflow for the digital design with Leone Cad-Cam expanders. The 3DLeone Designer software also allows the design of mixed anchorage expanders with 2 TADs or fully Bone Borne with 4 TADs.

Once the design will be done, the software will export the stl file of the framework which, once sintered through a laser melting process, will couple perfectly with the chosen Leone CAD-CAM expander, allowing a perfect laser welding.

## PROGRAMME:

- From analogue to digital expander
- Features of CAD-CAM Leone expanders
- Peculiarities and functionalities of 3DLeone Designer
- Viewer: the communication tool with the clinician

